

ITEM No. 1

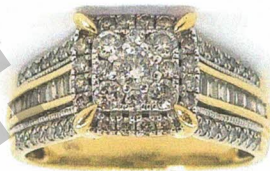
DESCRIPTION OF ITEMS

1 x 9ct yellow & white gold, multi diamond set dress RING.
The ring features nine centre diamonds grain set in a square shape, surrounded by a halo of sixteen round brilliant cut diamonds, with twenty tapered baguette cuts and thirty two round diamonds, grain set in the shoulders. The band has a tapered half round profile, stamped 375. Total weight: 5.30 grams.

Diamond Details: (Estimated and graded in setting) 77=1.00ct 9 = 0.30ct tdw, rbc, I-J/I2-I3, sizes 1.30mm to 3.20mm 20 = 0.30ct tdw, TBAG, TLB/I1-I2, sizes 2.00x1.00mm 48 = 0.40ct tdw, rbc & single cuts, I-J/I2-I3, sizes 1.20mm

Manufacture: Cast & hand finished.
REF: 056400020574

2750.00



TOTAL AMOUNT: \$2750.00

ASSESSOR: Kaye J Haddy

FGAA, Dip Val, NCVJ W072

05/09/2023

This valuation is not suitable for any purpose other than the classification stated above and should not be relied on by any entity besides the addressee, unless specifically noted. This quality assessment is subject to the terms and conditions supplied as per the take in form.

