

Australian Gem Testing Laboratory

AUSTRALIAN DIAMOND & JEWELLERY VALUATION CENTRE

Suite 1205 A, 227 Collins Street, Melbourne, Victoria 3000, Australia.

ABN 82674987449

valuations@mbloodgroup.com

Telephone (613) 9650 7221

CW 055500062853

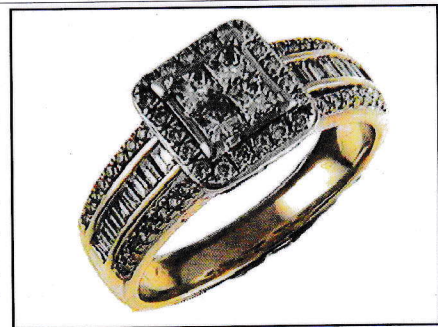
Date: 9 April 2024
Valuation No: JSCCC18044
Customer No: 18140
Page: 1 of 1

Valuation for Traditional Retail Insurance Replacement

Item 1

One, lady's, hand finished, raised 9ct yellow gold & diamond set, cluster ring. Plain, wide, low half round, tapered band, measures 3.21mm width (at base) x 1.02mm depth, with curved underrail, open back settings, underneath.

Feature, "cluster style" ring design, with shoulder stones. Comprising, a raised four claw setting to top, rhodium plated to highlight, houses four Princess cut diamonds, illusion claw set. Drops to a surround, contains twenty round brilliant cut diamonds, claw set. The extended shoulders, of the band, tapers up wide to the top. each shoulder having three rows, centre row is channel set, two outer rows are claw set, both sides. Polished finish, stamped "375, JP88" - acid tested as 9 carat gold. Finger size = P.



The ring contains;

Four illusion claw set Princess cut diamonds, clarity is "Si", colour is "I to J"(mixed), medium cut quality.

Dimensions = 2.70mm (L) x 2.60mm (W) x 1.85mm (D-estimated)

Total Weight = 0.42ct (estimated - see NOTE below).

Fifty Two claw set round brilliant cut diamonds, clarity is "Si & P1"(mixed), colour is "I to J"(mixed), medium cut quality.

Dimensions = 0.90mm (average diameter) x 0.55mm (D-estimated) (smallest)

Dimensions = 1.40mm (average diameter) x 0.85mm (D-estimated) (largest)

Total Weight = 0.32ct (estimated - see NOTE below).

Sixteen channel set baguette diamonds, clarity is "Vs, Si & P1"(mixed), colour is "H to I"(mixed), medium cut quality.

Average dimensions = 1.70mm (L) x 1.20mm (W) x 0.88mm (D-estimated)

Total Weight = 0.26ct (estimated - see NOTE below).

Total Item Weight = 5.09 grams, Total Gemstone Weight = 1.00ct, Total Metal Weight = 4.89 grams (estimated)

NOTE: Limited gemmological testing, inset. Due to setting constraints, the exact dimensions of the diamonds cannot be ascertained. Therefore, weight of the diamonds are very much estimated. For accurate testing, weights, colour, and clarity gradings, the diamonds, would require removal from the setting. The below replacement figure is based upon crafting a similar ring employing similar materials and techniques being for a retail insurance purpose only. This figure does not represent the previous selling price of the item and will not be indicative of the resale value of the item.

Insurance Replacement Valuation \$3,860.00

The total of the one item included in this valuation is Three Thousand Eight Hundred and Sixty dollars.

Total Value = \$3,860.00

These items were valued for Cash Converters
by James S Christie F.G.A.A., Dip. D.T., N.C.J.V. R.V. 264

Exchange Rates: US\$ 0.6603 Yen 100.2735 Metal Prices (US\$/ounce) : Gold 2336.60 Silver 27.77 Platinum 963.00

The article(s) described above have been examined and the values given are an expression of our opinion on the date stated. Gemstones have not been removed from the settings for accurate assessment and all grades, weights, and dimensions are approximate, unless otherwise stated. Whilst all care has been taken in making this valuation, no liability is accepted other than to the person to whom the certificate is given for any errors or omissions, including any liability to the person by reason of negligence. This valuation is NOT transferable to any third person or party. Values expressed in Australian dollars (including GST) and are based on current market conditions. This valuation has been made with the standards and methods of the National Council of Jewellery Valuers, using accepted procedures, and systems advocated by this organisation. The values are based on the valuer's judgment of gemstone quality, mounting and manufacturing costs and are made to the best of the valuer's ability. A diamond colour grading of "F" (Rare White Plus) or better and a clarity grading of Vvs (or better), cannot be given to a set diamond. A valuation of a certified diamond is based upon the gradings provided on the certificate. The replacement figure of older cut diamonds is based upon the modern cut equivalent of same estimated weight, colour, and clarity. A valuation for Traditional Retail Insurance Replacement does not infer any saving on a purchase price and will not be indicative of the resale value of the item.