



Australian Gem Testing Laboratory

AUSTRALIAN DIAMOND & JEWELLERY VALUATION CENTRE

Suite 1205 A, 227 Collins Street, Melbourne, Victoria 3000, Australia.
ABN 82674987449 | valuations@mbloodgroup.com | Telephone (613) 9650 7221

CW 055500062046

Date: 9 April 2024
Valuation No: JSCCC18040
Customer No: 18136
Page: 1 of 1

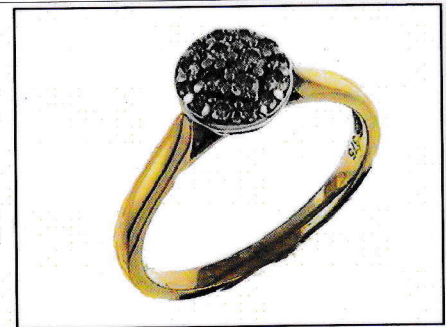
Valuation for Traditional Retail Insurance Replacement

Item 1

One, lady's hand-assembled raised, 9ct yellow and white gold, diamond set, cluster ring. Plain, narrow, low half round, tapered band, measures 1.96mm width (at base) x 1.00mm depth, with curved underrail.

Feature, "cluster style" ring design. Comprising a raised white gold cluster setting to top, houses seventeen round brilliant cut diamonds various sizes, all claw set. The extended shoulders, of the yellow gold band tapers up to pointed end terminations, to both sides.

Polished finish, stamped "375, Z" - acid tested as 9 carat gold. Finger size = N.



The ring contains;

Four claw set round brilliant cut diamonds, clarity is "Si", colour is "I to J" (mixed), medium cut quality.

Dimensions = 1.90mm (average diameter) x 1.16mm (D-estimated) (smallest)

Dimensions = 2.00mm (average diameter) x 1.22mm (D-estimated) (largest)

Total Weight = 0.12ct (estimated - see NOTE below).

Thirteen claw set round brilliant cut diamonds, clarity is "Si & P1" (mixed), colour is "I to J" (mixed), medium cut quality.

Dimensions = 1.30mm (average diameter) x 0.79mm (D-estimated) (smallest)

Dimensions = 1.60mm (average diameter) x 0.98mm (D-estimated) (largest)

Total Weight = 0.20ct (estimated - see NOTE below).

Total Item Weight = 2.28 grams, Total Gemstone Weight = 0.32ct, Total Metal Weight = 2.22 grams (estimated)

NOTE: Limited gemmological testing, inset. Due to setting constraints, the exact dimensions of the diamonds cannot be ascertained. Therefore, weight of the diamonds are very much estimated. For accurate testing, weights, colour, and clarity gradings, the diamonds, would require removal from the setting. The below replacement figure is based upon crafting a similar ring employing similar materials and techniques being for a retail insurance purpose only. This figure does not represent the previous selling price of the item and will not be indicative of the resale value of the item.

Insurance Replacement Valuation \$1,385.00

The total of the one item included in this valuation is One Thousand Three Hundred and Eighty Five dollars.

Total Value = \$1,385.00

These items were valued for Cash Converters
by James S Christie F.G.A.A., Dip. D.T., N.C.J.V. R.V. 264

Exchange Rates: US\$ 0.6603 Yen 100.2735 Metal Prices (US\$/ounce): Gold 2336.60 Silver 27.77 Platinum 963.00

The article(s) described above have been examined and the values given are an expression of our opinion on the date stated. Gemstones have not been removed from the settings for accurate assessment and all grades, weights, and dimensions are approximate, unless otherwise stated. Whilst all care has been taken in making this valuation, no liability is accepted other than to the person to whom the certificate is given for any errors or omissions, including any liability to the person by reason of negligence. This valuation is NOT transferable to any third person or party. Values expressed in Australian dollars (including GST) and are based on current market conditions. This valuation has been made with the standards and methods of the National Council of Jewellery Valuers, using accepted procedures, and systems advocated by this organisation. The values are based on the valuer's judgment of gemstone quality, mounting and manufacturing costs and are made to the best of the valuer's ability. A diamond colour grading of "F" (Rare White Plus) or better and a clarity grading of Vvs (or better), cannot be given to a set diamond. A valuation of a certified diamond is based upon the gradings provided on the certificate. The replacement figure of older cut diamonds is based upon the modern cut equivalent of same estimated weight, colour, and clarity. A valuation for Traditional Retail Insurance Replacement does not infer any saving on a purchase price and will not be indicative of the resale value of the item.