



RETAIL REPLACEMENT VALUATION

For: Cash Converters
Bunbury

Date: 16th August 2021
Ref: Stock # 204375

DIAMOND RING

(Stamped 750, HOF, N) 18ct White gold

One diamond is four claw set centrally and has a bezel set diamond either side below, and within the centre of a cross design diamond set under-rail. Diamonds are claw set in each criss-cross design shoulder. The double grooved lower shank measures 2.15mm in wide at the base. This item is of cadcam manufacture. Size N ½. 3.06 grams.

This valuation is subject to the terms and conditions supplied on the Take in Form at the time of requesting the valuation, see reverse side. This valuation is based on a traditional bricks & mortar main-stream retail outlet. The diamond weights, colour and clarity are estimated, exact measurements could not be obtained due to setting limitations.

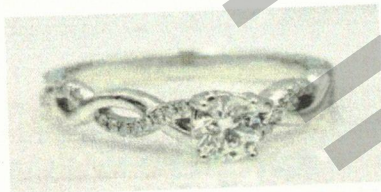
Diamond: Round Brilliant cut: 1 = 0.32 carats total estimated weight, measuring 4.39x4.42x2.77mm, Colour F, Clarity VS1
Girdle: Medium faceted, laser inscribed: HEARTS ON FIRE 155837.

Fluorescence: None

Diamonds: Round Brilliant cut: 2 = 0.018 carats total estimated weight, measuring 1.30mm, Colour G, Clarity VS

Diamonds: Round Brilliant cut: 26 = 0.13 carats total estimated weight, measuring 1.05mm, Colour G, Clarity VS

Diamonds: Round Brilliant cut: 16 = 0.03 carats total estimated weight, measuring 0.90mm, Colour G-H, Clarity VS-SI



Exchange rate US \$0.73

Metal price (AUD\$/ounce) Gold \$2417.80 Platinum \$1424.15

We have examined the articles in the above schedule and in our opinion the total of:

FOUR THOUSAND EIGHT HUNDRED AND SIXTY-FIVE DOLLARS

Represents the value of such articles for purposes stated.

TOTAL
\$4,865.00

Signed:

Teena A Fletcher FGAA, Dip Gem, NCJV Reg. Val No: W0084
NCJV Registered Valuer of W.A.
Fellow of Gemmological Association of Australia.

Gemstones have not been removed from the settings for accurate assessment, all grades and weights are approximate. Valuation for the purpose of retail replacement. Based on the current value at the time of valuation and includes Australian Government Taxes where applicable. This valuation is not suitable for any other purpose than the purpose(s) stated above and should not be relied on by an entity besides the addressee unless specifically noted.

