

# Haddys

Jewellery Valuers

REPORT NO:

CLASSIFICATION: Retail Replacement in a Perth Jewellery Store

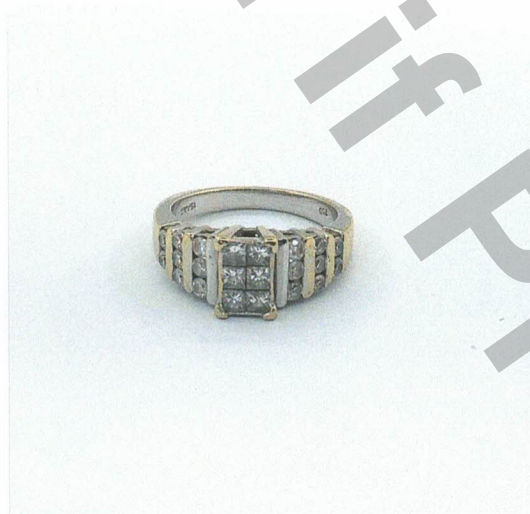
No. 092176

PROPERTY OF: Cash Converters

MIDLAND WA 6056

Page: 1

ITEM No.	DESCRIPTION OF ITEMS	VALUE
1	1 x 18ct white gold, twenty two diamond set engagement RING. The ring features six centre princess cut diamonds, invisible set in a rectangle, with 16 round brilliant cut shoulder diamonds channel set in three rows, on a tapered flat band, stamped 750. Total Weight: 6.52 grams. Diamond Details: (Weights & grades are estimated in setting) 6 = 0.60ct tdw, princess cuts, G/SI, size 2.57x1.80mm 16 = 0.56ct tdw, round brilliant cuts, H/SI, size 2.13mm Manufacture: Cast. REF: 238035	5400.00



TOTAL AMOUNT: \$5400.00

ASSESSOR: *K Haddy*

Kaye J Haddy  
FGAA, Dip Val, NCJV W072

05/09/2023

This valuation is not suitable for any purpose other than the classification stated above and should not be relied on by any entity besides the addressee, unless specifically noted. This quality assessment is subject to the terms and conditions supplied as per the take in form.

