



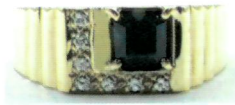
# Victoria Jeweller & Watchmaker

415 Albany Highway Victoria Park WA 6100 ABN: 8966762856 PH: 08 93612844  
Web: [www.victoriajeweller.com.au](http://www.victoriajeweller.com.au) Email: [info@victoriajeweller.com.au](mailto:info@victoriajeweller.com.au)

Roseville Enterprises, Joondalup  
Ref: 4533-382871

Date: 14 August 2024

## CERTIFICATE OF VALUATION



**Description:** A stamped 9K yellow gold one sapphire and seven diamond ring.  
The sapphire is four claw set in a corner with diamonds bead set in the surrounding row.  
The flared shoulders are ridged and the flat band measures 4.2mm at the base.  
Lost wax cast manufacture. Ring Size: Z+1.

**Measurements:**  
1 x Sapphire – square emerald faceted, 7.0mm x 6.0mm x 4.5mm, estimated weight 1.89ct, medium to dark blue colour.  
7 x Diamonds – round brilliant cut, 1.8mm, estimated weight 0.025ct each, Clarity SI, Colour G-I.

Due to the stones being set the weight, clarity and colour are estimated.  
Total Diamond Weight: 0.175ct.  
Total Weight: 9.60 grams.

Valuation based on retail replacement in a traditional bricks and mortar Perth retail outlet.

**Retail Replacement Value**

**\$4,795.00**

The total valuation of this item is four thousand seven hundred and ninety five dollars.

Exchange Rate: US\$0.65  
Metal Prices: Aus \$ : Gold - \$3,727.54  
\$ : Plat - \$1,446.52

*R9 Macham*

Valued by Rebecca Macham FGAA. NCJV Reg Valuer WA0063

Gemstones have not been removed from the settings for accurate assessment, all grades and weights are approximate. Valuation is based on the current value at the time of valuation and includes Australian Government Taxes where applicable.  
This valuation is not suitable for any purpose other than the purpose(s) stated above and should not be relied on by an entity besides the addressee unless specifically noted.