



Victoria Jeweller & Watchmaker

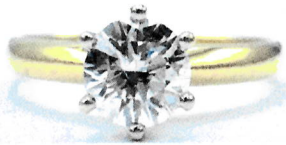


415 Albany Highway Victoria Park WA 6100 ABN: 8966762856 PH: 08 93612844
Web: www.victoriajeweller.com.au Email: info@victoriajeweller.com.au

Roseville Enterprises, Joondalup
Ref: 3877-350706

Date: 22 February 2023

CERTIFICATE OF VALUATION



Description: A ladies 18ct stamped 750 M yellow gold one diamond ring
Setting: white gold six claw collet.
Shoulders: tapered upraised.
Band: slightly rounded band, measures 1.9mm width.
Manufacture: cast and hand assembled.
Ring Size: P.

Measurements:

- 1 x Diamond – Round brilliant cut.
 - 6.5mm x 6.6mm x (4.0)mm.
 - Estimated weight 1.04ct.
 - Clarity: P1, Colour: J
 - Contains surface reaching inclusions.
 - Girdle: thin - medium faceted.
 - Fluorescence: medium blue – PL
- Inspector.

Due to the stones being set the weight, clarity and colour are estimated.
Total Diamond Weight: 1.04ct.
Total Weight: 3.50 grams.

Valuation based on retail replacement in a Mazzuchelli's Jewellery retail outlet.

Retail Replacement Value

\$11,999.00

The total valuation of this item is eleven thousand nine hundred and ninety nine dollars.

Exchange Rate: US\$0.68
Metal Prices: Aus \$: Gold - \$2,693.29

R9Macham

Valued by Rebecca Macham FGAA. NCJV Reg Valuer WA0063



Gemstones have not been removed from the settings for accurate assessment, all grades and weights are approximate. Valuation is based on the current value at the time of valuation and includes Australian Government Taxes where applicable.

This valuation is not suitable for any purpose other than the purpose(s) stated above and should not be relied on by an entity besides the addressee unless specifically noted.