



VICTORIA JEWELLER & WATCHMAKER

ABN 89 626 762 856 Tel: (08) 9361 2844

415 Albany Highway, Victoria Park, W.A. 6100

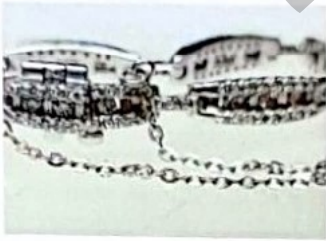
Web: www.victoriajeweller.com.au Email: info@victoriajeweller.com.au



CERTIFICATE OF VALUATION

Name: Cash Converters – Morley
Address: N/A

Reference: 1372-249784
Date: 18 March 2024



Description DIAMOND BRACELET

Stamped 750 MHJ 3.00, 18ct White gold.

Larger round brilliant cut diamonds and baguette cut diamonds are alternately channel set in the horizontal section of each link with four claw set round brilliant cut diamonds in rows above and below and having separate rectangle bar links featuring claw set round brilliant cut diamonds, alternately. A concealed slide box clasp with a hinged safety clip and safety chain are fitted and this item measures approximately sixteen centimetres in length. Exact replacement may be difficult.

Measurements

24 x Diamonds – Round Brilliant cut, 2.1mm, total estimated weight 0.84cts
Colour G-H, Clarity P1-P2

128 x Diamonds – Round Brilliant cut, 1.2-1.3mm, total estimated weight 0.90cts
Colour G-H, Clarity SI-P1

32 x Diamonds – Baguette cut, 1.9-2x1-1.1mm, total estimated weight 1.26cts
Colour G-H, Clarity SI

Total diamond weight: 3.00cts

Band: N/A

Ring Size: N/A

Manufacture: Mass production cast

Shank: N/A

Total Weight: 16.43 grams

Valuation based on retail replacement at a Perth traditional bricks and mortar retail outlet.

This valuation has been prepared for the sole purpose of retail replacement at a traditional bricks and mortar retail store. The value in this valuation may not be indicative of the usual market or sale price of this item. The valuation is subject to the terms and conditions supplied on the take-in form at the time of requesting this valuation, see reverse side.

THIRTEEN THOUSAND SIX HUNDRED & THIRTY DOLLARS

\$13,630.00

Represents the value for such articles for the purposes stated.

Exchange Rate: 0.65

Gold: \$3288

Plat: \$1451

(AUD\$/Ounce)

TEENA SHEPPARD FGAA

Dip GEM, NCJV Registered Valuer Reg W0084

Gemmologist

Member NCJV WA Division

MEMBER GAA WA Division

T Sheppard



Gemstones have not been removed from the settings for accurate assessment, all grades and weights are approximate. Valuation is based on the current value at the time of valuation and includes Australian Government Taxes where applicable.

This valuation is not suitable for any purpose other than the purpose(s) stated above and should not be relied on by an entity besides the addressee unless specifically noted.