



# VICTORIA JEWELLER & WATCHMAKER

ABN 89 626 762 856 Tel: (08) 9361 2844

415 Albany Highway, Victoria Park, W.A. 6100

Web: www.victoriajeweller.com.au Email: info@victoriajeweller.com.au



## CERTIFICATE OF VALUATION

Name: *Cash Converters Cannington*

Valuation/Stock: *8624-205621*

Address: *N/A*

Date: *21<sup>ST</sup> March 2023*



This valuation has been prepared for the sole purpose of retail replacement at a traditional bricks and mortar retail store. The value noted in this valuation may not be indicative of the usual market or sale price of this item. This valuation is subject to the terms and conditions supplied on the take-in form at the time of requesting the valuation, see reverse side.

We have examined the articles in the below schedule and in our opinion the total of

**FIVE THOUSAND & TWENTY DOLLARS**

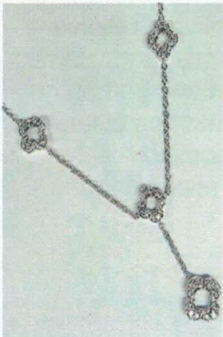
**TOTAL  
\$5,020.00**

Represents the value for such articles for the purposes stated.

**DESCRIPTION: DIAMOND NECKLET**

*(Stamped 750, \*335 AR) 18ct White gold.*

*Diamonds are bead set in three clover leaf shaped pieces, spaced evenly upon the cable link neck-chain and has a three-centimetre centre drop piece with a slightly larger diamond set clover leaf suspended freely. A boltring clasp is fitted.*



TOTAL ESTIMATED DIAMOND WEIGHT: <i>0.70cts</i>	
BAND: <i>N/A</i>	MEASURING: <i>43 centimetres</i>
RING SIZE: <i>N/A</i>	WEIGHT: <i>8.00 grams</i>
METHOD OF MANUFACTURE: <i>Cast &amp; assembled</i>	

*Diamonds: Round Brilliant cut: 4 = 0.16 carats total estimated weight, measuring 2.3mm,  
Diamonds: Round Brilliant cut: 20 = 0.40 carats total estimated weight, measuring 1.7mm,  
Diamonds: Round Brilliant cut: 24 = 0.14 carats total estimated weight, measuring 1.2mm,  
Colour F-H, Clarity VS-SI*

Exchange Rate AUD \$ 0.66 Metal Price (AUD\$/Ounce) Gold \$ 2964.65 Platinum \$1516.55

Signed:

**TEENA FLETCHER**

FGAA, Dip GEM, NCJV Registered Valuer Reg W0084

Gemmologist,

Member NCJV WA Division

Member GAA WA Division

*The diamond/gemstone weights colour and clarity are estimated, exact measurements could not be obtained due to setting restrictions. Based on the current value at the time of valuation and includes Australian Government taxes where applicable. This valuation is not suitable for any other purpose(s) than stated above and should not be relied on by any entity besides the addressee unless specifically noted.*

