



Australian Gem Testing Laboratory

AUSTRALIAN DIAMOND & JEWELLERY VALUATION CENTRE

ABN: 82 674 987 449 MARGARET M BLOOD GROUP PTY LTD ACN: 674 987 449
Suite 1205 A, 227 Collins Street, Melbourne, Victoria 3000, Australia.
valuations@mbloodgroup.com Telephone (613) 9650 7221 www.agtl.com.au

GR 028500277205

Date: 16 May 2024
Valuation No: ASMCC16924
Customer No: 16105
Page: 1 of 1

629981

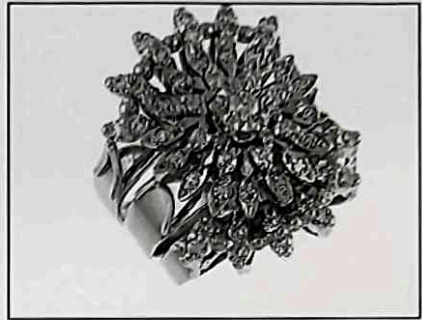
Valuation for Traditional Retail Insurance Replacement

Item 1

One, hand assembled, 18ct white gold, multi-stone, ring set, of cast construction.

The set comprising a 18ct white gold diamond set engagement ring with a fitted and matching 18ct white gold diamond set wedding and eternity rings. Each ring having a plain, narrow, flat, tapered band with a combined basal width of 6.71mm x 0.75mm in depth.

The engagement ring has a central round illusion setting, housing one round brilliant cut diamond, illusion set. Surrounding is two rows with a total of twenty-four 'petal' shaped plates, each housing one single cut diamond, varying in size, and bead set. The fitted and matching wedding and eternity rings, are identical. There are two rows of six single cut diamonds, within a curved top plate. All of the settings are supported with an open wire base, and are secured to the top of the plain and polished bands. The wedding and eternity rings sit alongside the engagement ring above.



Polished finish. Stamped '18CT' - acid tested as 18 carat gold. Ring size: L.

The ring set contains:

One illusion set round brilliant cut diamond, clarity is "P1", colour is "G".

Dimensions = 2.62mm(Dia) x 1.60mm(D-estimated) x 2%(Girdle Thickness)

Total Weight = 0.07ct (estimated - see NOTE below)

Forty Eight bead set single cut diamonds, clarity is "Vs & Si" (mixed), colour is "G to H" (mixed).

Dimensions = 1.22mm (diameter) (smallest)

Dimensions = 1.68mm (diameter) (largest)

Total Weight = 0.73ct (estimated - see NOTE below)

Total Item Weight = 14.01 grams Total Gemstone Weight = 0.80ct Total Metal Weight = 13.85 grams (estimated)

NOTE: Due to setting constraints, the exact dimensions of the gemstones cannot be ascertained. Therefore, weights of the gemstones are very much estimated. For accurate testing, weights, colour, and clarity gradings, the gemstones require removal from the settings. The below replacement figure is based upon crafting a similar ring set employing similar materials and techniques being for a retail insurance purpose only. This figure does not represent the previous selling price of the item and will not be indicative of the resale value of the item.

Insurance Replacement Valuation \$7,395.00

The total of the one item included in this valuation is Seven Thousand Three Hundred and Ninety Five dollars.

Total Value = \$7,395.00

These items were valued for Cash Converters

by Amina S McPhee F.G.A.A., Dip. D.T., N.C.J.V. R.V.

Exchange Rates: US\$ 0.6692 Yen 103.6327 Metal Prices (US\$/ounce) : Gold 2386.00 Silver 29.73 Platinum 1075.00

The article(s) described above have been examined and the values given are an expression of our opinion on the date stated. Gemstones have not been removed from the settings for accurate assessment and all grades, weights, and dimensions are approximate, unless otherwise stated. Whilst all care has been taken in making this valuation, no liability is accepted other than to the person to whom the certificate is given for any errors or omissions, including any liability to the person by reason of negligence. This valuation is NOT transferable to any third person or party. Values expressed in Australian dollars (including GST) and are based on current market conditions. This valuation has been made with the standards and methods of the National Council of Jewellery Valuers, using accepted procedures, and systems advocated by this organisation. The values are based on the valuer's judgment of gemstone quality, mounting and manufacturing costs and are made to the best of the valuer's ability. A diamond colour grading of "F" (Rare White Plus) or better and a clarity grading of Vvs (or better), cannot be given to a set diamond. A valuation of a certified diamond is based upon the gradings provided on the certificate. The replacement figure of older cut diamonds is based upon the modern cut equivalent of same estimated weight, colour, and clarity. A valuation for Traditional Retail Insurance Replacement does not infer any saving on a purchase price and will not be indicative of the resale value of the item.

