



# Australian Gem Testing Laboratory

AUSTRALIAN DIAMOND & JEWELLERY VALUATION CENTRE

Suite 1205 A, 227 Collins Street, Melbourne, Victoria 3000, Australia.  
ABN 52 634 019 237 valuations@mbloodgroup.com

Telephone (613) 9650 7221

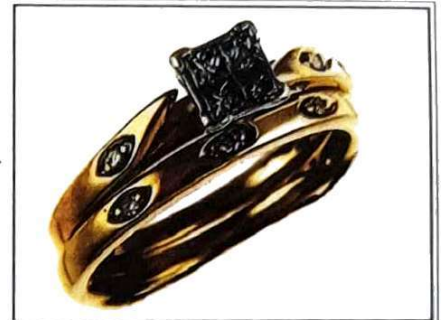
GR 028500268645

Date: 8 August 2023  
Valuation No: ASMCC15107  
Customer No: 14262  
Page: 1 of 1

## Valuation for Traditional Retail Insurance Replacement

### Item 1

One, hand assembled, 9ct yellow and 9ct white gold, and rhodium plated, multi-stone, ring set, of cast construction. The set comprising a 9ct yellow gold and 9ct white gold diamond set engagement ring, with a matching 9ct yellow gold and rhodium plated, diamond set wedding ring. Each ring having a plain, narrow, low half round band with a combined basal width of 3.20mm x 1.06mm in depth. The tops have been hollowed out, and the settings are open back (cut out).



The engagement ring has a square top plate setting, housing four Princess cut diamonds, invisibly set. The top plate is also secured with four claws. The 'cross over' style extended and pointed shoulders each house one single cut diamond, bead set within a marquise shape. The central setting is supported with a curved underrail. The matching wedding ring houses three single cut diamonds. Each bead set within a marquise shape, along the top of the band. Rhodium plating to all of the setting areas. The wedding ring sits alongside the engagement ring above.

Polished finish, stamped '375 Z' - acid tested as 9 carat gold. Finger size: I.

### The rings contain:

Four invisibly set Princess cut diamonds, clarity is "Si & P1" (mixed), colour is "H to I" (mixed).

Dimensions = 2.00mm(L) x 2.00mm(W) x 1.42mm(D-estimated) x 2%(Girdle Thickness)

Total Weight = 0.20ct (estimated - see NOTE below)

Five bead set single cut diamonds, clarity is "P2", colour is "H".

Dimensions = 1.00mm (Diameter)

Total Weight = 0.03ct (estimated - see NOTE below)

Total Item Weight = 2.60 grams Total Gemstone Weight = 0.23ct Total Metal Weight = 2.55 grams (estimated)

NOTE: Due to setting constraints, the exact dimensions of the gemstones cannot be ascertained. Therefore, weights of the gemstones are very much estimated. For accurate testing, weights, colour, and clarity gradings, the gemstones require removal from the settings. The below replacement figure is based upon crafting a similar ring employing similar materials and techniques being for a retail insurance purpose only. This figure does not represent the previous selling price of the item and will not be indicative of the resale value of the item.

**Insurance Replacement Valuation \$1,500.00**

The total of the one item included in this valuation is One Thousand Five Hundred dollars.

**Total Value = \$1,500.00**

These items were valued for Cash Converters

by Amina S McPhee F.G.A.A., Dip. D.T., N.C.J.V. R.V.

Exchange Rates: US\$ 0.6574 Yen 93.6810 Metal Prices (US\$/ounce): Gold 1937.10 Silver 23.19 Platinum 928.00

The article(s) described above have been examined and the values given are an expression of our opinion on the date stated. Gemstones have not been removed from the settings for accurate assessment and all grades, weights, and dimensions are approximate, unless otherwise stated. Whilst all care has been taken in making this valuation, no liability is accepted other than to the person to whom the certificate is given for any errors or omissions, including any liability to the person by reason of negligence. This valuation is NOT transferable to any third person or party. Values expressed in Australian dollars (including GST) and are based on current market conditions. This valuation has been made with the standards and methods of the National Council of Jewellery Valuers, using accepted procedures, and systems advocated by this organisation. The values are based on the valuer's judgment of gemstone quality, mounting and manufacturing costs and are made to the best of the valuer's ability. A diamond colour grading of "F" (Rare White Plus) or better and a clarity grading of Vvs (or better), cannot be given to a set diamond. A valuation of a certified diamond is based upon the gradings provided on the certificate. The replacement figure of older cut diamonds is based upon the modern cut equivalent of same estimated weight, colour, and clarity. A valuation for Traditional Retail Insurance Replacement does not infer any saving on a purchase price and will not be indicative of the resale value of the item.

