



# Australian Gem Testing Laboratory

**AUSTRALIAN DIAMOND & JEWELLERY VALUATION CENTRE**

Suite 1205 A, 227 Collins Street, Melbourne, Victoria 3000, Australia.  
ABN 52 634 019 237      valuations@mbloodgroup.com      Telephone (613) 9650 7221

MW 028000170569

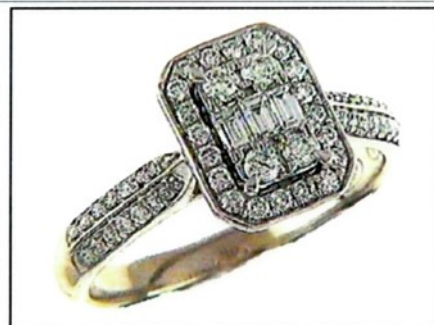
Date: 19 November 2023  
Valuation No: MMBCC14331  
Customer No: 14385  
Page: 1 of 1

## Valuation for Traditional Retail Insurance Replacement

### Item 1

One, hand-assembled, 9ct yellow gold and 9ct white gold, multistone, gem set ring. Plain, narrow, tapered band of 2.35mm in width (at base) x 1.09mm depth, with a curved underrail, with hollow, open back shoulder settings.

Feature central raised four claw setting, housing three baguette cut diamonds, with two round brilliant cut diamonds (largest) to each end. Surrounded by a single row of twenty round brilliant cut diamonds, also claw set. A four claw support base, then all secured between the extended shoulders of the yellow gold plain and polished band. Each shoulder having a double row, claw set with a total of sixteen round brilliant cut diamonds, tapering in size to smallest.



Polished finish - stamped '375 JP88' - acid tested as 9 carat gold. Finger size is M.

The ring contains:

Three claw set baguette cut diamonds, clarity 'Vs & Si' (mixed), colour 'G'.  
Dimensions = 2.70mm(L) x 1.90mm(W) x 1.20mm(D-estimated) x 2%(Girdle Thickness)  
Total Weight = 0.18ct (estimated - see NOTE below)

Fifty Six claw set round brilliant cut diamonds, clarity 'Si, P1 & P2' (mixed), colour 'G to I' (mixed).  
Dimensions = 0.80mm(Dia) x 0.49mm(D-estimated) x 2%(Girdle Thickness) (smallest)  
Dimensions = 2.15mm(Dia) x 1.31mm(D-estimated) x 2%(Girdle Thickness) (largest)  
Total Weight = 0.47ct (estimated - see NOTE below)

Total Item Weight = 2.94 grams - Total Gemstone Weight = 0.65ct - Total Metal Weight = 2.81 grams (estimated)

NOTE: Due to setting constraints, the exact dimensions of the gemstones cannot be ascertained. Therefore, weights of the gemstones are very much estimated. For accurate testing, weights, colour, and clarity gradings, the gemstones require removal from the settings. The below replacement figure is based upon crafting a similar ring employing similar materials and techniques being for a retail insurance purpose only. This figure does not represent the previous selling price of the item and will not be indicative of the resale value of the item.

**Insurance Replacement Valuation \$3,275.00**

The total of the one item included in this valuation is Three Thousand Two Hundred and Seventy Five dollars.

**Total Value = \$3,275.00**

These items were valued for Cash Converters  
by Margaret M Blood F.G.A.A., Dip. D.T., N.C.J.V., R.V. 345

Exchange Rates: US\$ 0.6504 Yen 97.3059 Metal Prices (US\$/ounce) : Gold 1982.10 Silver 23.82 Platinum 910.00

The article(s) described above have been examined and the values given are an expression of our opinion on the date stated. Gemstones have not been removed from the settings for accurate assessment and all grades, weights, and dimensions are approximate, unless otherwise stated. Whilst all care has been taken in making this valuation, no liability is accepted other than to the person to whom the certificate is given for any errors or omissions, including any liability to the person by reason of negligence. This valuation is NOT transferable to any third person or party. Values expressed in Australian dollars (including GST) and are based on current market conditions. This valuation has been made with the standards and methods of the National Council of Jewellery Valuers, using accepted procedures, and systems advocated by this organisation. The values are based on the valuer's judgment of gemstone quality, mounting and manufacturing costs and are made to the best of the valuer's ability. A diamond colour grading of "F" (Rare White Plus) or better and a clarity grading of Vvs (or better), cannot be given to a set diamond. A valuation of a certified diamond is based upon the gradings provided on the certificate. The replacement figure of older cut diamonds is based upon the modern cut equivalent of same estimated weight, colour, and clarity. A valuation for Traditional Retail Insurance Replacement does not infer any saving on a purchase price and will not be indicative of the resale value of the item.

