



Australian Gem Testing Laboratory

AUSTRALIAN DIAMOND & JEWELLERY VALUATION CENTRE

ABN: 82 674 987 449 MARGARET M BLOOD GROUP PTY LTD ACN: 674 987 449
Suite 1205 A, 227 Collins Street, Melbourne, Victoria 3000, Australia.
valuations@mbloodgroup.com Telephone (613) 9650 7221 www.agtl.com.au

SS 027900405628

SS598

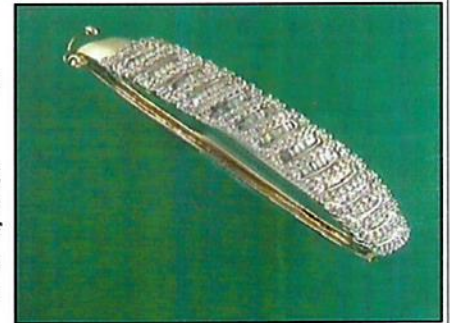
Date: 28 August 2024
Valuation No: ASMCC17794
Customer No: 16983
Page: 1 of 1

Valuation for Traditional Retail Insurance Replacement

Item 1

One, 9ct yellow gold and rhodium plated, gem set, hollow hinged bangle, of hand-assembled construction.

Feature one row of baguette cut and tapered baguette cut diamonds, channel set, alternating with one row of round brilliant cut diamonds, claw set. The rows span across the top of the front panel, and the settings are secured between the tapering shoulders. There are a total of eighty-nine baguette cut and tapered baguette cut diamonds, one hundred and seventy-one round brilliant cut diamonds and one single cut diamond. The bangle is finished with a box clasp, and a figure 8 safety catch. Rhodium plating to the diamond setting areas.



Bangle dimensions = 63.00mm (ave. length) x 51.00mm (ave. width) x 1.56mm (ave. depth).

Polished finish.

Stamped '9K DDG' - acid tested as 9 carat gold.

The bangle contains:

Eighty Nine channel set baguette cut diamonds, clarity is "Si & P1" (mixed), colour is "H to I" (mixed).

Dimensions (average) = 1.79mm(L) x 1.12mm(W) x 0.82mm(D-estimated) x 2%(Girdle Thickness)

Total Weight = 1.00ct (estimated - see NOTE below)

One Hundred And Seventy Two claw set round brilliant cut diamonds, clarity is "P1 & P2" (mixed), colour is "H to I" (mixed).

Dimensions (average) = 1.11mm(Dia) x 0.68mm(D-estimated) x 2%(Girdle Thickness)

Total Weight = 1.00ct (estimated - see NOTE below)

Total Item Weight = 15.47 grams Total Gemstone Weight = 2.00ct Total Metal Weight = 15.07 grams (estimated)

NOTE: Due to setting constraints, the exact dimensions of the gemstones cannot be ascertained. Therefore, weights of the gemstones are very much estimated. For accurate testing, weights, colour, and clarity gradings, the gemstones require removal from the settings. The below replacement figure is based upon crafting a similar bangle employing similar materials and techniques being for a retail insurance purpose only. This figure does not represent the previous selling price of the item and will not be indicative of the resale value of the item.

Insurance Replacement Valuation \$7,800.00

The total of the one item included in this valuation is Seven Thousand Eight Hundred dollars.

Total Value = \$7,800.00

These items were valued for Cash Converters

by Amina S McPhee F.G.A.A., Dip. D.T., N.C.J.V. R.V.

Exchange Rates: US\$ 0.6793 Yen 97.7876 Metal Prices (US\$/ounce) : Gold 2524.90 Silver 30.02 Platinum 968.00

The article(s) described above have been examined and the values given are an expression of our opinion on the date stated. Gemstones have not been removed from the settings for accurate assessment and all grades, weights, and dimensions are approximate, unless otherwise stated. Whilst all care has been taken in making this valuation, no liability is accepted other than to the person to whom the certificate is given for any errors or omissions, including any liability to the person by reason of negligence. This valuation is NOT transferable to any third person or party. Values expressed in Australian dollars (including GST) and are based on current market conditions. This valuation has been made with the standards and methods of the National Council of Jewellery Valuers, using accepted procedures, and systems advocated by this organisation. The values are based on the valuer's judgment of gemstone quality, mounting and manufacturing costs and are made to the best of the valuer's ability. A diamond colour grading of "F" (Rare White Plus) or better and a clarity grading of Vvs (or better), cannot be given to a set diamond. A valuation of a certified diamond is based upon the gradings provided on the certificate. The replacement figure of older cut diamonds is based upon the modern cut equivalent of same estimated weight, colour, and clarity. A valuation for Traditional Retail Insurance Replacement does not infer any saving on a purchase price and will not be indicative of the resale value of the item.

