



# RETAIL VALUATION

DATE COMPLETED  
JANUARY 28, 2024

APPRAISAL NUMBER  
TV30447

SKU / STOCK NUMBER  
2751104

DOCUMENT FUNCTION  
RETAIL VALUATION

PREPARED FOR:  
HRCC

CUSTOMER ADDRESS:  
BROADMEADOW, NEW SOUTH WALES, AUSTRALIA

## DIAMOND RING

One cast polished 18K white gold diamond engagement ring with a slightly rounded shank. The ring is a size M and weighs a total of 4.48 grams. Stamped "18K". The "michael hill" trademark (or hallmark) can also be found on the item. In very good condition.

### INSTRUMENTS USED

- Binocular Microscope
- Diamond Color Masters
- Diamond Grading Light
- Dichroscope
- Electronic Scale
- Gemstone / Diamond Tester
- Loupe 10x
- Metal Tester (ED-XRF)
- Millimeter Gauge
- Refractometer
- Ring Mandrel
- Spectroscope
- Ultraviolet (UV) Light

### BAR SET IN 18 CARAT WHITE GOLD WITH:

One (1) princess cut natural diamond

Measurements ..... 4.32mm x 4.34mm x 3.20mm in depth.  
 Carat Weight ..... 0.51 ct.  
 Colour ..... I  
 Clarity ..... VS2  
 Cut ..... Very Good  
 Laser Inscription ..... ADGL H51129 michael hill

### CHANNEL SET IN 18 CARAT WHITE GOLD WITH:

Two (2) princess cut natural diamonds

Measurements ..... 2.50mm x 2.50mm x ~1.75mm in depth.  
 Weight Range ..... 0.100 ct. - 0.100 ct.  
 Estimated Total Weight ..... 0.200 ct.  
 Colour ..... I - J  
 Clarity ..... SI2  
 Cut ..... Medium

### CHANNEL SET IN 18 CARAT WHITE GOLD WITH:

Four (4) princess cut natural diamonds

Measurements ..... 2.25mm x 2.25mm x ~1.58mm in depth.  
 Weight Range ..... 0.072 ct. - 0.072 ct.  
 Estimated Total Weight ..... 0.290 ct.  
 Colour ..... I - J  
 Clarity ..... VS1  
 Cut ..... Medium

### METAL PRICES

- Gold: AUD \$3,072.32/toz.
- USD \$1.00 => AUD \$1.52



# RETAIL VALUATION

DATE COMPLETED  
JANUARY 28, 2024

APPRAISAL NUMBER  
TV30447

SKU / STOCK NUMBER  
2751104

DOCUMENT FUNCTION  
RETAIL VALUATION

PREPARED FOR:  
HRCC

CUSTOMER ADDRESS:  
BROADMEADOW, NEW SOUTH WALES, AUSTRALIA

## CHANNEL SET IN 18 CARAT WHITE GOLD WITH:

Two (2) princess cut natural diamonds

Measurements .....	2.00mm x 2.00mm x ~1.40mm in depth.
Weight Range .....	0.055 ct. - 0.055 ct.
Estimated Total Weight .....	0.110 ct.
Colour .....	I - J
Clarity .....	VS2 - SI1
Cut .....	Medium

### Total Weights

Total Weight of Diamonds ..... ~ 1.11 ctw.

## AUD \$6,475.00

Estimated Retail Value  
\*Value includes sales tax(es).

Judi Hening, FGAA, GAA, NCJV Registered Valuer NCJVQ inc.  
Q0197  
Head Jewellery Valuer



**ADGL**

Australian Diamond Grading Laboratory

www.adgl.com.au

Cut grade calculated by  
GIA Facetware™

The following were, at the time of examination by the Australian Diamond Grading Laboratory (ADGL), the characteristics of the diamond described herein using the following equipment: 10x magnification (fully corrected triplet loupe and binocular microscope), diamondlite, diamond colour master stones and digital diamond colour grading machine, ultraviolet lamps, millimetre gauge, carat balance, OGI Facet Scan Proportion Analyser and ancillary instruments as necessary.

This diamond has been graded under the internationally recognised standards of the 4C's; Carat Weight, Colour, Clarity and Cut. This report is not a valuation or appraisal. The recipient of the report may wish to consult an accredited jeweller or gemmologist about the importance and interrelationship of cut, colour, clarity and carat weight.

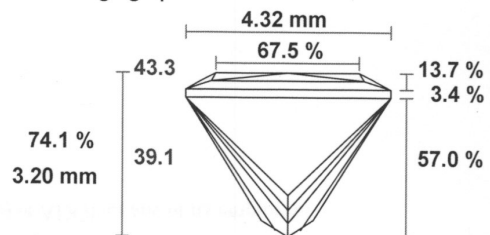
The characteristics for this diamond have been established in accordance with strict guidelines for quality control and using scientific methods together with state of the art technology.

CERTIFICATE NO. H51129

08/08/2014

SHAPE PRINCESS  
CARAT WEIGHT 0.51 ct  
MEASUREMENTS (mm) 4.32 - 4.34  
TABLE SIZE 67.5% EX  
TOTAL DEPTH 74.1% EX  
CROWN ANGLE 43.3  
CROWN HEIGHT 13.7% EX  
PAVIL ANGLE 39.1  
PAVIL DEPTH 57.0% EX  
CULET 0.2% EX

Average graph



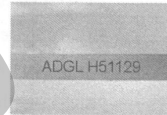
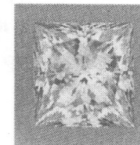
CUT PROPORTION EXCELLENT  
CUT SYMMETRY VERY GOOD  
POLISH VERY GOOD

COLOUR I  
CLARITY VS2

COMMENTS Inscribed ADGL H51129  
& michael hill

SIGNATURE

M. Muller B. Comm. G.I.A. (DIA) (1983)



GIA Colour Grading Scale



GIA Clarity Grading Scale



GIA Cut Grading Scale

Cut Grade	Excellent	Very Good	Good	Fair	Poor	Very Poor
Symmetry	Excellent	Very Good	Good	Fair	Poor	Very Poor
Polish	Excellent	Very Good	Good	Fair	Poor	Very Poor

Diamond Brilliance Grading Scale

