





# ADGL

Australian Diamond Grading Laboratory

www.adgl.com.au  
 PO Box 5228 Brendale Qld 4500  
 Ph: (07) 3889 6905

The following were, at the time of examination by the Australian Diamond Grading Laboratory (ADGL), the characteristics of the diamond described herein using the following equipment: 10x magnification (fully corrected triplet loupe and binocular microscope), diamondlite and digital diamond colour grading machine, ultraviolet lamps, millimetre gauge, carat balance, OGI MegaScope Proportion Analyser and ancillary instruments as necessary.

This diamond has been graded under the internationally recognised standards of the ICs, Carat Weight, Colour, Clarity and Cut. This report is not a valuation or appraisal. The recipient of the report may wish to consult an accredited jeweller or gemmologist about the importance and interrelationship of cut, colour, clarity and carat weight.

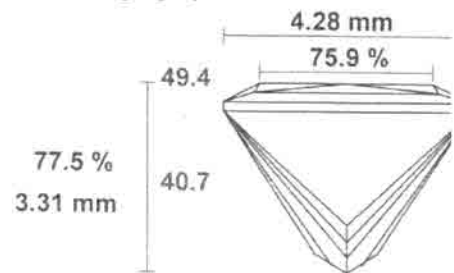
The characteristics for this diamond have been established in accordance with strict guidelines for quality control and using scientific methods together with state of the art technology.

**CERTIFICATE NO. A34659**

24/09/201

<b>SHAPE</b>	PRINCESS	
<b>CARAT WEIGHT</b>	0.54 ct	
<b>MEASUREMENTS (mm)</b>	4.28 - 4.49	
<b>TABLE SIZE</b>	75.9%	VG
<b>TOTAL DEPTH</b>	77.5%	VG
<b>CROWN ANGLE</b>	49.4	
<b>CROWN HEIGHT</b>	12.2%	EX
<b>PAVIL ANGLE</b>	40.7	
<b>PAVIL DEPTH</b>	62.0%	EX
<b>CULET</b>	0.2%	EX
<b>CUT PROPORTION</b>	VERY GOOD	
<b>CUT SYMMETRY</b>	VERY GOOD	
<b>POLISH</b>	EXCELLENT	

Average graph

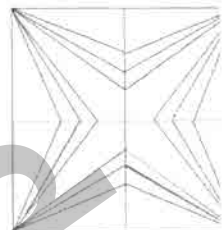
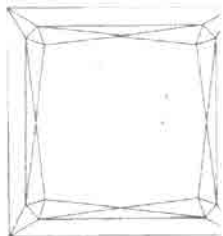
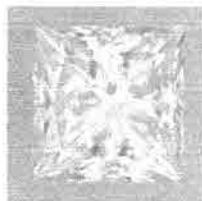


**FLUORESCENCE** None

**COLOUR CLARITY** G VS1

**COMMENTS** Inscribed ADGL A34659

**SIGNATURE**



The plotting marks indicated, refer (red) and external (green) character symbols do not necessarily reflect the characteristics.