



# Australian Gem Testing Laboratory

**AUSTRALIAN DIAMOND & JEWELLERY VALUATION CENTRE**

Suite 1205 A, 227 Collins Street, Melbourne, Victoria 3000, Australia.  
ABN 82674987449      valuations@mbloodgroup.com      Telephone (613) 9650 7221

FG 001500667064

Date: 19 March 2024  
Valuation No: MMBCC14634  
Customer No: 14689  
Page: 1 of 1

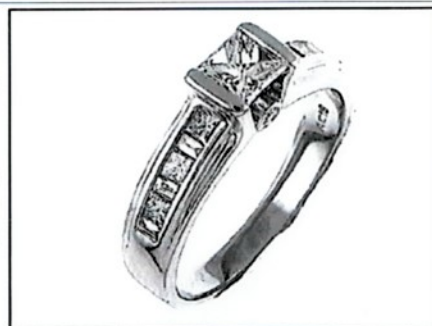
## Valuation for Traditional Retail Insurance Replacement

### Item 1

One, hand-assembled, 18ct white gold, multistone, gem set ring. Plain, narrow, tapered band of 2.74mm in width (at base) x 0.82mm depth, with open back (cut-out) settings.

Feature central 'U' shaped setting, housing one Princess cut diamond, end set. The rail each side being of a round-shape bezel setting, housing one round brilliant cut diamond, rub-over set. Each shoulder having three Princess cut diamonds, tapering in size, alternating with three baguette cut diamonds, tapering in size, channel set.

Polished finish - stamped '750 AC16' - acid tested as 18 carat gold. Finger size is M.



The ring contains:

One end set Princess cut diamond, clarity 'Vs', colour 'K'.

Dimensions = 4.50mm(L) x 4.50mm(W) x 2.95mm(D-estimated) x 2%(Girdle Thickness)

Total Weight = 0.48ct (estimated - see NOTE below)

Six channel set Princess cut diamonds, clarity 'Vs', colour 'H to I' (mixed).

Dimensions = 2.15mm(L) x 2.15mm(W) x 1.30mm(D-estimated) x 2%(Girdle Thickness) (smallest)

Dimensions = 2.26mm(L) x 2.25mm(W) x 1.40mm(D-estimated) x 2%(Girdle Thickness) (largest)

Total Weight = 0.33ct (estimated - see NOTE below)

Six channel set baguette cut diamonds, clarity 'Vs & Si' (mixed), colour 'H to J' (mixed).

Dimensions = 2.15mm(L) x 1.54mm(W) x 1.00mm(D-estimated) x 2%(Girdle Thickness)

Total Weight = 0.16ct (estimated - see NOTE below)

Two rub over set round brilliant cut diamonds, clarity 'P1', colour 'H'.

Dimensions (average) = 1.50mm(Dia) x 0.92mm(D-estimated) x 2%(Girdle Thickness)

Total Weight = 0.03ct (estimated - see NOTE below)

Total Item Weight = 4.98 grams - Total Gemstone Weight = 1.00ct - Total Metal Weight = 4.78 grams (estimated)

NOTE: Due to setting constraints, the exact dimensions of the gemstones cannot be ascertained. Therefore, weights of the gemstones are very much estimated. For accurate testing, weights, colour, and clarity gradings, the gemstones require removal from the settings. The below replacement figure is based upon crafting a similar ring employing similar materials and techniques being for a retail insurance purpose only. This figure does not represent the previous selling price of the item and will not be indicative of the resale value of the item.

**Insurance Replacement Valuation \$5,900.00**

The total of the one item included in this valuation is Five Thousand Nine Hundred dollars.

**Total Value = \$5,900.00**

These items were valued for Cash Converters  
by Margaret M Blood F.G.A.A., Dip. D.T., N.C.J.V., R.V. 345

Exchange Rates: US\$ 0.6555 Yen 97.7877 Metal Prices (US\$/ounce): Gold 2159.30 Silver 25.00 Platinum 914.00

The article(s) described above have been examined and the values given are an expression of our opinion on the date stated. Gemstones have not been removed from the settings for accurate assessment and all grades, weights, and dimensions are approximate, unless otherwise stated. Whilst all care has been taken in making this valuation, no liability is accepted other than to the person to whom the certificate is given for any errors or omissions, including any liability to the person by reason of negligence. This valuation is NOT transferable to any third person or party. Values expressed in Australian dollars (including GST) and are based on current market conditions. This valuation has been made with the standards and methods of the National Council of Jewellery Valuers, using accepted procedures, and systems advocated by this organisation. The values are based on the valuer's judgment of gemstone quality, mounting and manufacturing costs and are made to the best of the valuer's ability. A diamond colour grading of "F" (Rare White Plus) or better and a clarity grading of Vvs (or better), cannot be given to a set diamond. A valuation of a certified diamond is based upon the gradings provided on the certificate. The replacement figure of older cut diamonds is based on the current market conditions. This valuation does not represent the previous selling price of the item and will not be indicative of the resale value of the item.

