



# VICTORIA JEWELLER & WATCHMAKER

ABN 89 626 762 856 Tel: (08) 9361 2844

415 Albany Highway, Victoria Park, W.A. 6100

Web: www.victoriajeweller.com.au Email: info@victoriajeweller.com.au



## CERTIFICATE OF VALUATION

Cash Converters Armadale

Reference: 2572-376710

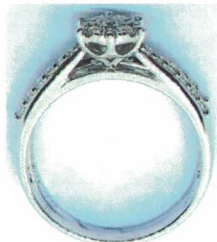
Date: 2 August 2024

### Description



A set of two 9ct, stamped 375 JP88 white gold thirty six diamond rings. The large diamond is eight claw set in the centre and is surrounded by four claw set diamonds set in a six claw collet setting. Diamonds are bead set along the park lane design tapered shoulders. Diamonds are bead set along the wedder.

### Measurements



- 1 x Diamond – round brilliant cut, 3.0mm, estimated weight 0.10ct, Clarity SI, Colour J-L chipped and valued accordingly.
- 8 x Diamonds – round brilliant cut, 1.7mm, estimated weight 0.02ct each, Clarity SI-P1, Colour J-L.
- 23 x Diamonds – round brilliant cut, 1.5mm to 1.6mm, estimated weight 0.015ct each, Clarity SI-P1, Colour J-L.
- 4 x Diamonds – round brilliant cut, 1.4mm, estimated weight 0.01ct each, Clarity SI-P1, Colour J-L.

Total dia weight: 0.645ct.

Band: Slightly rounded.

Ring Size: O,P.

Manufacture: Cast.

Shank: 2.1mm & 2.0mm.

Total Weight: 3.80 grams.

### Valuation based on retail replacement at a Perth Prouds Jewellery retail outlet.

This valuation has been prepared for the sole purpose of retail replacement at a traditional bricks and mortar retail store. The value in this valuation may not be indicative of the usual market or sale price of this item. The valuation is subject to the terms and conditions supplied on the take-in form at the time of requesting this valuation, see reverse side.

**One thousand nine hundred and ninety nine dollars.**

**\$1,999.00**

Represents the value for such articles for the purposes stated.

Exchange Rate: \$0.65  
(AUD\$/Ounce)

Gold: \$3797.47

Plat: \$1529.39

*R9Macham*

Valued by Rebecca Macham

FGAA. NCJV Reg Valuer WA0063



Gemstones have not been removed from the settings for accurate assessment, all grades and weights are approximate. Valuation is based on the current value at the time of valuation and includes Australian Government Taxes where applicable.

This valuation is not suitable for any purpose other than the purpose(s) stated above and should not be relied on by an entity besides the addressee unless specifically noted.