



VICTORIA JEWELLER & WATCHMAKER

ABN 89 626 762 856 Tel: (08) 9361 2844
415 Albany Highway, Victoria Park, W.A. 6100



Web: www.victoriajeweller.com.au Email: info@victoriajeweller.com.au

CERTIFICATE OF VALUATION

Cash Converters Armadale

Reference: 2561-375366

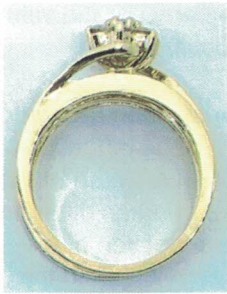
Date: 30 July 2024

Description



A set of two 9ct, stamped 375 15A&C yellow gold thirty four diamond rings.
A diamond is six claw set in the centre with diamonds one claw chener set in a surrounding row, set in a wire basket cluster setting.
Diamonds are channel set either side in the band and channel set in the wedder.

Measurements



- 7 x Diamonds – round brilliant cut, 2.4mm, estimated weight 0.05ct each, Clarity P1-P2, Colour K-M.
- 6 x Diamonds – round brilliant cut, 2.1mm to 2.2mm, estimated weight 0.04ct each, Clarity P1, Colour K-M.
- 2 x Diamonds – round brilliant cut, 1.8mm to 1.9mm, estimated weight 0.025ct each, Clarity P1, Colour K-M.
- 2 x Diamonds – round brilliant cut, 1.7mm, estimated weight 0.02ct each, Clarity P1, Colour K-M.
- 17 x Diamonds – round brilliant cut, 1.4mm, estimated weight 0.01ct each, Clarity P1-P2, Colour K-M.

Total dia weight: 0.85ct.
Band: Flat.
Ring Size: O.

Manufacture: Cast.
Shank: 2.3mm & 2.0mm.
Total Weight: 5.40 grams.

Valuation based on retail replacement at a Perth traditional bricks and mortar retail outlet.

This valuation has been prepared for the sole purpose of retail replacement at a traditional bricks and mortar retail store. The value in this valuation may not be indicative of the usual market or sale price of this item. The valuation is subject to the terms and conditions supplied on the take-in form at the time of requesting this valuation, see reverse side.

Two thousand nine hundred and forty dollars.

\$2,940.00

Represents the value for such articles for the purposes stated.

Exchange Rate: \$0.65
(AUD\$/Ounce)

Gold: \$3647.27

Plat: \$1490.34

R9 Macham

Valued by Rebecca Macham
FGAA. NCJV Reg Valuer WA0063



Gemstones have not been removed from the settings for accurate assessment, all grades and weights are approximate. Valuation is based on the current value at the time of valuation and includes Australian Government Taxes where applicable.

This valuation is not suitable for any purpose other than the purpose(s) stated above and should not be relied on by an entity besides the addressee unless specifically noted.