



VICTORIA JEWELLER & WATCHMAKER

ABN 89 626 762 856 Tel: (08) 9361 2844

415 Albany Highway, Victoria Park, W.A. 6100

Web: www.victoriajeweller.com.au Email: info@victoriajeweller.com.au



CERTIFICATE OF VALUATION

Cash Converters Armadale

Reference: 2563-375037

Date: 30 July 2024

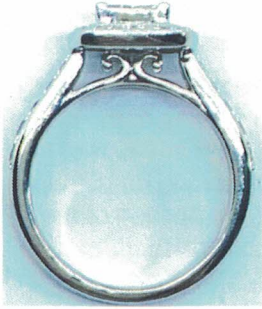


Description

A 14ct, stamped 585 white gold thirty eight diamond ring.
Diamonds are invisibly set in a square, four corner claw set in the centre.
Diamonds are bead set in the surrounding square halo.
Diamonds are bead set in the park lane design shoulders.

Measurements

- 4 x Diamonds – princess cut, 2.7mm x 2.7mm, estimated weight 0.11ct each, Clarity SI, Colour J-K.
- 24 x Diamonds – round brilliant cut, 1.1mm, estimated weight 0.005ct each, Clarity P1-P2, Colour I-K.
- 4 x Diamonds – round brilliant cut, 2.2mm, estimated weight 0.04ct each, Clarity P1-P2, Colour I-K.
- 2 x Diamonds – round brilliant cut, 2.0mm, estimated weight 0.03ct each, Clarity P1-P2, Colour I-K.
- 2 x Diamonds – round brilliant cut, 1.7mm, estimated weight 0.02ct each, Clarity P1-P2, Colour I-K.
- 2 x Diamonds – round brilliant cut, 1.4mm, estimated weight 0.01ct each, Clarity P1-P2, Colour I-K.



Total dia weight: 0.84ct.

Band: Slightly rounded.

Ring Size: K.

Manufacture: Cast.

Shank: 2.3mm at the base.

Total Weight: 4.00 grams.

Valuation based on retail replacement at a Perth traditional bricks and mortar retail outlet.

This valuation has been prepared for the sole purpose of retail replacement at a traditional bricks and mortar retail store. The value in this valuation may not be indicative of the usual market or sale price of this item. The valuation is subject to the terms and conditions supplied on the take-in form at the time of requesting this valuation, see reverse side.

Three thousand six hundred and seventy dollars.

\$3,670.00

Represents the value for such articles for the purposes stated.

Exchange Rate: \$0.65
(AUD\$/Ounce)

Gold: \$3647.27

Plat: \$1490.34

Valued by Rebecca Macham
FGAA. NCJV Reg Valuer WA0063

R9Macham



Gemstones have not been removed from the settings for accurate assessment, all grades and weights are approximate. Valuation is based on the current value at the time of valuation and includes Australian Government Taxes where applicable.

This valuation is not suitable for any purpose other than the purpose(s) stated above and should not be relied on by an entity besides the addressee unless specifically noted.