



VICTORIA JEWELLER & WATCHMAKER

ABN 89 626 762 856 Tel: (08) 9361 2844

415 Albany Highway, Victoria Park, W.A. 6100

Web: www.victoriajeweller.com.au Email: info@victoriajeweller.com.au



CERTIFICATE OF VALUATION

Cash Converters Armadale

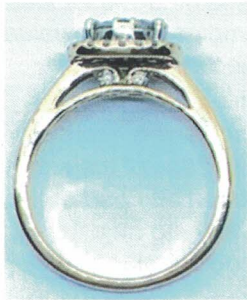
Reference: 2560-374986

Date: 30 July 2024



Description

A 9ct, stamped 375 yellow gold forty one diamond ring.
A diamond is invisibly set in the centre with diamonds white gold bead set surrounding.
Diamonds are white gold four claw set in the surrounding square halo.
Diamonds are rub over set either side at the base of the setting.



Measurements

- 1 x Diamond – round brilliant cut, 3.3mm, estimated weight 0.13ct, Clarity P2, Colour G-I.
- 6 x Diamonds – round brilliant cut, 2.8mm to 2.9mm, estimated weight 0.09ct each, Clarity P2, Colour G-I.
- 30 x Diamonds – round brilliant cut, 1.4mm, estimated weight 0.01ct each, Clarity P2, Colour G-I.
- 4 x Diamonds – round brilliant cut, 1.7mm, estimated weight 0.02ct each, Clarity P2, Colour G-I.

Total dia weight: 1.05ct.

Band: Slightly rounded.

Ring Size: Q.

Manufacture: Cast – hand assembled

Shank: 2.2mm at the base.

Total Weight: 4.70 grams.

Valuation based on retail replacement at a Perth traditional bricks and mortar retail outlet.

This valuation has been prepared for the sole purpose of retail replacement at a traditional bricks and mortar retail store. The value in this valuation may not be indicative of the usual market or sale price of this item. The valuation is subject to the terms and conditions supplied on the take-in form at the time of requesting this valuation, see reverse side.

Four thousand and forty five dollars.

\$4,045.00

Represents the value for such articles for the purposes stated.

Exchange Rate: \$0.65
(AUD\$/Ounce)

Gold: \$3647.27

Plat: \$1490.34

R9 Macham

Valued by Rebecca Macham
FGAA. NCJV Reg Valuer WA0063



Gemstones have not been removed from the settings for accurate assessment, all grades and weights are approximate. Valuation is based on the current value at the time of valuation and includes Australian Government Taxes where applicable.

This valuation is not suitable for any purpose other than the purpose(s) stated above and should not be relied on by an entity besides the addressee unless specifically noted.