



RETAIL VALUATION

DATE COMPLETED
MARCH 10, 2024

APPRAISAL NUMBER
TV30915

SKU / STOCK NUMBER
2744939

DOCUMENT FUNCTION
RETAIL VALUATION

PREPARED FOR:
HRCC

CUSTOMER ADDRESS:
BROADMEADOW, NEW SOUTH WALES, AUSTRALIA

SYNTHETIC DIAMOND RING

One cast polished 18K white gold synthetic diamond solitaire engagement ring with a slightly rounded tapered shank. The ring is a size M and weighs a total of 2.67 grams. Stamped "750". Engraved with "an M shaped symbol". In very good condition.

INSTRUMENTS USED

- Binocular Microscope
- Diamond Color Masters
- Diamond Grading Light
- Dichroscope
- Electronic Scale
- Gemstone / Diamond Tester
- Loupe 10x
- Metal Tester (ED-XRF)
- Millimeter Gauge
- Refractometer
- Ring Mandrel
- Spectroscope
- Ultraviolet (UV) Light

4-CLAW SET IN 18 CARAT WHITE GOLD WITH:

One (1) round brilliant cut laboratory-grown diamond

Measurements	4.33mm - 4.35mm in diameter x 2.64mm in depth.
Carat Weight	0.300 ct.
Colour	D
Clarity	VS1
Cut	Ideal
Fluorescence (LW)	None / Inert
Polish	Excellent
Symmetry	Excellent
Girdle Thickness	Medium (faceted)
Laser Inscription	IGI LG578322199
Report	IGI Report #LG578322199 issued on Apr 24, 2023
Comments	This Laboratory Grown Diamond was created by Chemical Vapor Deposition (CVD) growth process and may include post-growth treatmentType Ila

Total Weights

Total Weight of Diamonds 0.30 ctw.

AUD \$1,930.00

Estimated Retail Value
*Value includes sales tax(es).

Judi Hening, FGAA, GAA, NCJV Registered Valuer NCJVQ inc.
Q0197
Head Jewellery Valuer



LG578322199

LABORATORY GROWN DIAMOND REPORT

IGI LABORATORY GROWN DIAMOND IDENTIFICATION REPORT

April 24, 2023
IGI Report Number LG578322199
Description LABORATORY GROWN DIAMOND
Shape and Cutting Style ROUND BRILLIANT
Measurements 4.33 - 4.35 X 2.64 MM

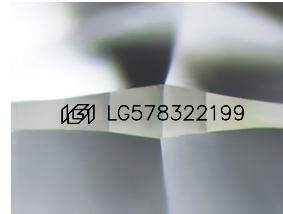
GRADING RESULTS

Carat Weight 0.30 CARAT
Color Grade D
Clarity Grade VS 1
Cut Grade IDEAL

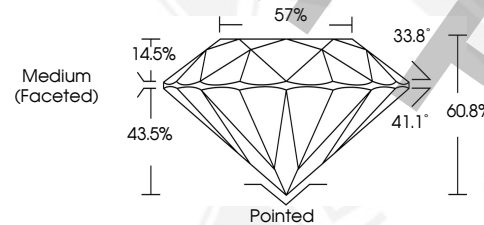
ADDITIONAL GRADING INFORMATION

Polish EXCELLENT
Symmetry EXCELLENT
Fluorescence NONE
Inscription(s) LG578322199

Comments: This Laboratory Grown Diamond was created by Chemical Vapor Deposition (CVD) growth process and may include post-growth treatment. Type Ila



Sample Image Used



IGI LABORATORY GROWN DIAMOND ID REPORT

April 24, 2023
IGI Report Number LG578322199
ROUND BRILLIANT
4.33 - 4.35 X 2.64 MM
Carat Weight 0.30 CARAT
Color Grade D
Clarity Grade VS 1
Cut Grade IDEAL
Polish EXCELLENT
Symmetry EXCELLENT
Fluorescence NONE
Inscription(s) LG578322199
Comments: This Laboratory Grown Diamond was created by Chemical Vapor Deposition (CVD) growth process and may include post-growth treatment. Type Ila

IGI LABORATORY GROWN DIAMOND ID REPORT

April 24, 2023
IGI Report Number LG578322199
ROUND BRILLIANT
4.33 - 4.35 X 2.64 MM
Carat Weight 0.30 CARAT
Color Grade D
Clarity Grade VS 1
Cut Grade IDEAL
Polish EXCELLENT
Symmetry EXCELLENT
Fluorescence NONE
Inscription(s) LG578322199
Comments: This Laboratory Grown Diamond was created by Chemical Vapor Deposition (CVD) growth process and may include post-growth treatment. Type Ila

THIS DOCUMENT WAS PRODUCED WITH THE FOLLOWING SECURITY MEASURES: SPECIAL DOCUMENT PAPER, INK SCREENS, WATERMARK, BACKGROUND DESIGNS, HOLOGRAM AND OTHER SECURITY FEATURES NOT LISTED AND DO EXCEED DOCUMENT SECURITY INDUSTRY GUIDELINES.

For terms & conditions and to verify this report, please visit www.igi.org