



Est. 1985

Valuation Centre of Australia

The grade, weight and dimensions of gemstones not removed from settings are approximate.

Diamond clarity grades are based on 10 x magnification by an experienced observer. Colour grading is by comparison to "Master" coloured diamonds.

Discrepancies in diamond grading may occur when diamonds are set due to the colour of the precious metal and restrictions of the setting. The precious metal purity is that marked on the article. When testing of the precious metal is considered necessary the results are approximate.

All conclusions are substantiated by careful examination of the items within limitations imposed by their setting using appropriate gemological and scientific testing methods. The values and descriptions stated are opinions.

The valuer cannot accept responsibility for any transaction or third party relying on this document.

Whilst every care has been taken in the preparation of this valuation, no liability is accepted for any statement or opinion or for any error or omission.

When photographs of items are supplied, the original may not be true to size. Colours may vary due to limitations of the photographic reproduction.

Replacement values may not necessarily represent the price one might pay in a retail showroom after negotiations between a buyer and seller.

The values stated do not represent the value one would expect if the items were sold on the second hand market or internet.

This valuation is for the sole use of the above name and shall not be reproduced except in its entirety.

MEMBERSHIPS



Stock Ref: 050100195934

Commissioned by: TIGERSHOW PTY LTD

A 14-carat yellow and white Gold Diamond engagement ring, four prong right-angle claw set with a princess cut centre Diamond supported by two four-claw set round brilliant cut Diamonds in a traditional open gallery trilogy style mount featuring elevated shoulders with ribbed saddles on a straight edge partly grooved shank.

Centre Diamond Weight: 0.36ct (calculated)

Colour: H/I

Clarity: SI2

Supporting Diamond Weight: 0.14ct (calculated)

Colour: H/I

Clarity: SI

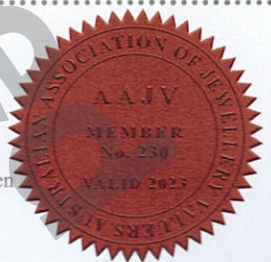
Item Weight: 3.97 grams

Value: \$3,570



Value in words: Three Thousand, Five Hundred and Seventy dollars

Unless otherwise stated, all coloured stones listed on this valuation have probably been subject to a stable and possibly undetectable colour and or clarity enhancement process. Prevailing market values are based on such universally accepted processes. This document represents a subjective opinion of the current retail replacement value of the items and may be used for insurance replacement purposes. Replacement values are based on a similar "new item" from a traditional bricks and mortar jewellery outlet in the major metropolitan areas. Valuations may be affected by fluctuations in the exchange rate, therefore, the valuer assumes no responsibility for the unforeseen changes in the market conditions.



Signed:  J. S. Coetsee FGAA Dip DT

Gemmologist & Registered Valuer No. AAJV.230..

Ref No: 427806

Forex USD/AUD
0.70

Gold US/Oz
1915

Platinum US/Oz
N/A

Date:
3rd February 2023