



Est. 1985

# Valuation Centre of Australia

The grade, weight and dimensions of gemstones not removed from settings are approximate.

Diamond clarity grades are based on 10 x magnification by an experienced observer. Colour grading is by comparison to "Master" coloured diamonds.

Discrepancies in diamond grading may occur when diamonds are set due to the colour of the precious metal and restrictions of the setting. The precious metal purity is that marked on the article. When testing of the precious metal is considered necessary the results are approximate.

All conclusions are substantiated by careful examination of the items within limitations imposed by their setting using appropriate gemological and scientific testing methods. The values and descriptions stated are opinions.

The valuer cannot accept responsibility for any transaction or third party relying on this document.

Whilst every care has been taken in the preparation of this valuation, no liability is accepted for any statement or opinion or for any error or omission.

When photographs of items are supplied, the original may not be true to size. Colours may vary due to limitations of the photographic reproduction.

Replacement values may not necessarily represent the price one might pay in a retail showroom after negotiations between a buyer and seller.

The values stated do not represent the value one would expect if the items were sold on the second hand market or internet.

This valuation is for the sole use of the above name and shall not be reproduced except in its entirety.

### MEMBERSHIPS



Stock No: 190149

Commissioned by: TIGERSHOW PTY LTD

A Diamond dress ring featuring one pear cut diamond claw/end supported by fifty nine brilliant cut Diamonds bead set in shoulders and halo, twenty four brilliant cut Diamonds bead set and two round cut natural rubies rubover set in underrail. White gold shank with a flat straight edged profile. Stamped and valued as 14ct.

Diamond Cut: Pear

Dimensions: 5.4 x 3.7 x 2.7(depth is estimated) mm

Weight: Approximately 0.33ct

Colour/Clarity: I-J/P1

Make: Medium

Diamond Cut: Brilliant

Dimensions: 83 = 1.0 x 1.0mm

Weight: 0.54ct

Colour/Clarity: I-J/P1

Make: Fair

Ruby Cut: Round

Dimensions: 1.5 x 1.5mm

Weight: Approximately 0.04ct

Colour/Clarity: Red/Medium Inclusions

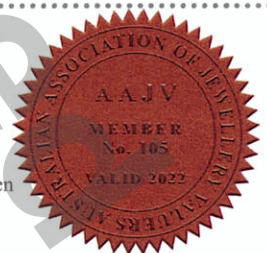
Weight: 3.3 grams

Value: \$3,975



**Value in Words:** Three Thousand, Nine Hundred and Seventy-Five dollars

Unless otherwise stated, all coloured stones listed on this valuation have probably been subject to a stable and possibly undetectable colour and or clarity enhancement process. Prevailing market values are based on such universally accepted processes. This document represents a subjective opinion of the current retail replacement value of the items and may be used for insurance replacement purposes. Replacement values are based on a similar "new item" from a traditional bricks and mortar jewellery outlet in the major metropolitan areas. Valuations may be affected by fluctuations in the exchange rate, therefore, the valuer assumes no responsibility for the unforeseen changes in the market conditions.



Signed: *K. Campbell* K. Campbell FGAA

Gemmologist & Registered Valuer No. *AAJV 105*

Forex USD/AUD  
0.63

Gold US/Oz  
1650

Platinum US/Oz  
N/A

Ref No: 427189

Date:  
24th October 2022