

Elenium

Manufacturing Jeweller & Registered Valuer
ABN: 67 365 683 892

Telephone: 0417 754 510
Email: admin@eleniumjewellery.com

ON BEHALF OF LINKHAVEN PTY LTD



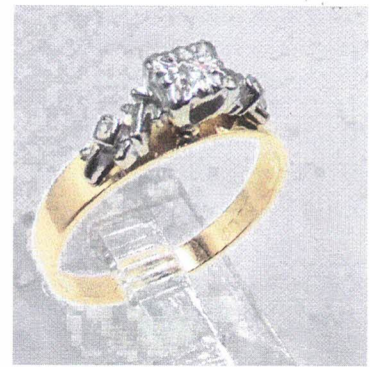
THIS VALUATION IS FOR Retail Replacement For Insurance Purposes
FOR REPLACEMENT AT A STANDARD MARKET RETAIL OUTLET UNLESS OTHERWISE SPECIFIED.
PRICES BASED ON CURRENT VALUE AT THE UNDERMENTIONED DATE AND INCLUDES AUSTRALIAN
GOVERNMENT TAXES WHERE APPLICABLE, AND SHOULD NOT BE CONSIDERED AS RETAIL SALES VALUE.

VALUATION NO.
54788

STORE NO.	042500227752	ITEM NO.		DAILY RATE	Gold \$1937.990 USD/oz USD \$ 0.636
-----------	--------------	----------	--	------------	--

Description

1 x 18ct yellow gold and Palladium dress ring.
Set with 1 x 1.70mm [0.02mct] round brilliant cut diamond grain set in a raised 4
claw illusion topped setting with cross-over patterned illusion set in the
shoulders all in Palladium.
As per the photo.
The shank is flat and tapers from 4.00mm - 2.30mm wide.



Total Weight : 3.35 gram(s)

Metal Quality : Stamped = 18ct PALL

Method of Manufacture : Cast - Hand Assembled

Qty	Type	Colour	Clarity /Grade	Make	Tot. Est. Weight
1	Diamond	H/I	P1		0.020 ct(s)

This valuation is based on retail replacement for insurance purposes only in a traditional single retail outlet in the Brisbane Metropolitan area

I have examined the articles in the above schedule and in my opinion the total of
\$1,599.08 One Thousand Five Hundred and Ninety Nine Dollars and 8 Cents
represents the value of such articles only for purposes stated.

Dated this 14th day of November 20²³

Assessed by Marlon Ostergaard F.G.A F.G.A.A. Dip. D.T.

Signed  Reg. No. Q185

Registered member of National Council of Jewellery Valuers (NCJV). In the event of loss enquiries are welcomed regarding the procedure in making a claim and to furnish a quotation for replacement.

The articles described above have been examined and the values given are an expression of our opinion. Gemstones have not been removed from settings for accurate assessment. All grades and weights are approximate. Whilst all care has been taken in making this valuation, no liability is accepted for any errors or omissions in the certificate, including any liability to any person by reason or negligence (other than the person to whom the certificate is given). Values expressed in Australian dollars based on current market conditions may or may not reflect retail prices.

