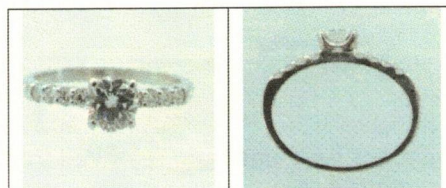




RETAIL REPLACEMENT VALUATION

DATE: 4th October 2022

REF: Stock # 160403



FOR: Cash Converters
Bunbury

DIAMOND RING

(Stamped 750, SG72927) 18ct White gold

The centre diamond is four claw U collet set and is flanked by smaller diamonds being four scalloped claw set each side.

SHANK: Flat	SHANK MEASUREMENT: 1.93 < 2.03mm
RING SIZE: Q	WEIGHT: 3.33 grams
METHOD OF MANUFACTURE: Assessed as Cadcam and assembled	

This valuation is subject to the terms and conditions supplied on the Take-in form at the time of requesting the valuation, see reverse side. This valuation is based on a tradition bricks and mortar retail outlet. The diamond weights, colour and clarity are estimated, exact measurements could not be obtained due to setting restrictions.

Diamond: Round Brilliant cut: 1 = 0.75 carats total weight, measuring 5.85x5.92x3.54mm, Colour E, Clarity VVS2
Girdle: Medium faceted
Fluorescence: Slight
Cut Grade: Excellent
As per IGI Diamond report # F4D23323, laser inscribed: ARGYLE, IGI F4D23323
Diamonds: Round Brilliant cut: 8 = 0.24 carats total estimated weight, measuring 1.9-2mm, Colour G-H, Clarity VS-S1

Exchange rate AUD \$0.65 Metal Price (AUD\$/ounce) Gold \$2604.69 Platinum \$1390.67

We have examined the articles in the above schedule and in our opinion the total of:

FOURTEEN THOUSAND EIGHT HUNDRED AND TWENTY DOLLARS

Represents the value of such articles for the purpose stated.

Signed:

Teena A Fletcher FGAA, Dip Gem, NCJV Registered Val. No: W0084

National Council of Jewellery Valuers, Western Australian Division.

Fellow of Gemmological Association of Australia, Western Australian Division.

TOTAL
\$14,820.00



Gemstones have not been removed from the settings for accurate assessment, all grades and weights are approximate. Valuation for the purpose of retail replacement. Based on the current value at the time of valuation and includes Australian Government taxes where applicable. This valuation is not suitable for any other purpose(s) than stated above and should not be relied on by an entity besides the addressee unless specifically noted.



Diamond Report Summary

Number: F4D23323
Date: ANTWERP January 9 2006

Description: Natural Diamond
Shape And Cut: Round Brilliant
Weight: 0.75 Carat
Measurements: 5.85 x 5.92 x 3.54 mm
Clarity Grade: VVS 2
Color Grade: E
Fluorescence: Slight

Antwerp Grading Information

Polish And Symmetry: Good
Proportions: Very Good
Table Diameter: 60.5%
Crown Height: 13%
Pavilion Depth: 43.5%
Girdle Thickness: Medium (Faceted)
Culet Size: Pointed
Comments: Laserscribe on Girdle: IGI F4D23323
AIBYLE

LEARN WITH VIDEOS

SHAPE

Round Emerald Marquise Heart Pear Cushion Radiant Oval Princess

COLOR

D - F Colorless G - J Near Colorless K - M Slightly Tinted N - R Very Light S - Z Light

CARAT

Ct 0,05 0,10 0,20 0,25 0,30 0,40 0,50 0,70 0,90 1,00 1,25 1,50 1,75 2,00 2,50 3,00

Ø% 2,5 3,0 3,8 4,1 4,5 4,8 5,2 5,8 6,3 6,5 6,9 7,4 7,8 8,2 8,8 9,4

CLARITY

I.F. Internally Flawless

VVS 1 VVS 2 Very Very Slightly Included

VS 1 VS 2 Very Slightly Included

SI 1 SI 2 Slightly Included

I 1 I 2 I 3 Included

CUT

Grade Diameter, Crown Angle, Table Width, Crown Height, Girdle, Pavilion Depth, Total Depth, Pavilion Angle, Culet

Light Return: Too Shallow, Too Deep, Excellent to Good

Hearts & Arrows: "Ideal", Excellent to Very Good



Europe

- Antwerp +
- Italy +

Middle East

- Tel Aviv +
- Dubai +

North America

- New York +
- Los Angeles +

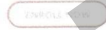
East Asia

- Hong Kong +
- Shanghai +
- Shenzhen +
- Bangkok +

South Asia

- Mumbai +
- New Delhi +
- Hyderabad +
- Kolkata +
- Surat +
- Ahmedabad +
- Thrissur +
- Chennai +
- Jaipur +
- Bangalore +
- Indore +
- Chandigarh +
- Coimbatore +

We Train the Best Gemologists in the World



IGI's supreme position in the gemological world is no coincidence. It is the result of continuous research, support and synergy with professionals and consumers alike.

ABOUT US

- About IGI
- Press Room
- Timeline
- Affiliations
- Importance of Certification

SERVICES

- Our Expertise
- How to Read a Report
- Diamond Reports
- Jewelry Report
- Colored Stone Report
- Screening Services
- Sorting Services
- Security Seal
- Laserscribe
- Verify Your Report

EDUCATION

- Gemological Education
- School Courses
- Course Schedules
- Tuition Fees
- Enrollment Form
- eLearning Courses
- Examiner Form
- Gemstone Articles
- Retail Support
- Learn with Videos
- Verify a Diploma

Other

- Press
- Shows
- Consumer Services
- Contact Us

INTERNATIONAL GEMOLOGICAL INSTITUTE

IGI ICP 號 19000101 號 1

FOR ONLINE

Terms & Conditions Privacy policy Terms of use

Powered by Tecolts