



# Australian Gem Testing Laboratory

**AUSTRALIAN DIAMOND & JEWELLERY VALUATION CENTRE**

ABN: 82 674 987 449 MARGARET M BLOOD GROUP PTY LTD ACN: 674 987 449  
Suite 1205 A, 227 Collins Street, Melbourne, Victoria 3000, Australia.  
valuations@mbloodgroup.com Telephone (613) 9650 7221 www.agtl.com.au

GL 039800385615

Date: 23 August 2024  
Valuation No: ASMCC17751  
Customer No: 16939  
Page: 1 of 1

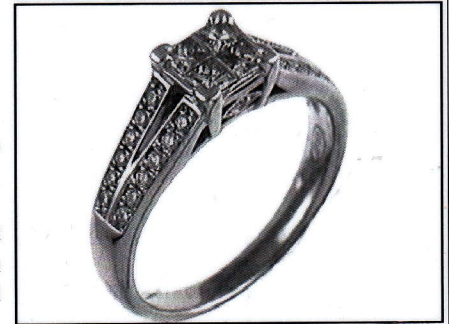
## Valuation for Traditional Retail Insurance Replacement

### Item 1

One, 18ct white gold, gem set, 'cluster' style ring, of cast construction.

Plain, narrow, low half round, tapered band of 2.28mm width (at base) x 1.14mm depth, with a hollow top and shoulders, open back settings, and a curved underrail.

Feature central square top plate, within a four claw setting, housing four Princess cut diamonds, invisibly set. The setting is secured between the 'split' style shoulders, of the plain and polished band. The gallery and shoulders are embellished with a total of twenty-six round brilliant cut diamonds, varying in size, claw set.



Polished finish. Stamped '750 JP88' - acid tested as 18 carat gold. Ring size: J 1/2.

The ring contains:

- Four invisibly set Princess cut diamonds, clarity is "Vs & Si" (mixed), colour is "I to J" (mixed).  
Dimensions (average) = 2.40mm(L) x 2.40mm(W) x 1.70mm(D-estimated) x 2%(Girdle Thickness)  
Total Weight = 0.34ct (estimated - see NOTE below)
- Twenty Six claw set round brilliant cut diamonds, clarity is "Si" (mixed), colour is "I to J" (mixed).  
Dimensions = 0.95mm(Dia) x 0.58mm(D-estimated) x 2%(Girdle Thickness) (smallest)  
Dimensions = 1.30mm(Dia) x 0.79mm(D-estimated) x 2%(Girdle Thickness) (largest)  
Total Weight = 0.23ct (estimated - see NOTE below)

Total Item Weight = 3.65 grams Total Gemstone Weight = 0.55ct Total Metal Weight = 3.54 grams (estimated)

NOTE: Due to setting constraints, the exact dimensions of the gemstones cannot be ascertained. Therefore, weights of the gemstones are very much estimated. For accurate testing, weights, colour, and clarity gradings, the gemstones require removal from the settings. The below replacement figure is based upon crafting a similar ring employing similar materials and techniques being for a retail insurance purpose only. This figure does not represent the previous selling price of the item and will not be indicative of the resale value of the item.

**Insurance Replacement Valuation \$3,200.00**

The total of the one item included in this valuation is Three Thousand Two Hundred dollars.

**Total Value = \$3,200.00**

These items were valued for Cash Converters  
by Amina S McPhee F.G.A.A., Dip. D.T., N.C.J.V. R.V.

Exchange Rates: US\$ 0.6706 Yen 98.0895 Metal Prices (US\$/ounce) : Gold 2484.40 Silver 29.03 Platinum 956.00

The article(s) described above have been examined and the values given are an expression of our opinion on the date stated. Gemstones have not been removed from the settings for accurate assessment and all grades, weights, and dimensions are approximate, unless otherwise stated. Whilst all care has been taken in making this valuation, no liability is accepted other than to the person to whom the certificate is given for any errors or omissions, including any liability to the person by reason of negligence. This valuation is NOT transferable to any third person or party. Values expressed in Australian dollars (including GST) and are based on current market conditions. This valuation has been made with the standards and methods of the National Council of Jewellery Valuers, using accepted procedures, and systems advocated by this organisation. The values are based on the valuer's judgment of gemstone quality, mounting and manufacturing costs and are made to the best of the valuer's ability. A diamond colour grading of "F" (Rare White Plus) or better and a clarity grading of Vvs (or better), cannot be given to a set diamond. A valuation of a certified diamond is based upon the gradings provided on the certificate. The replacement figure of older cut diamonds is based upon the modern cut equivalent of same estimated weight, colour, and clarity. A valuation for Traditional Retail Insurance Replacement does not infer any saving on a purchase price and will not be indicative of the resale value of the item.

