



Australian Gem Testing Laboratory

AUSTRALIAN DIAMOND & JEWELLERY VALUATION CENTRE

Suite 1205 A, 227 Collins Street, Melbourne, Victoria 3000, Australia.
ABN 52 634 019 237 valuations@mbloodgroup.com Telephone (613) 9650 7221

MC 035900228062

Date: 25 January 2024
Valuation No: JSCCC17745
Customer No: 17836
Page: 1 of 1

Valuation for Traditional Retail Insurance Replacement

Item 1

One lady's, hand-assembled raised, 18ct white gold & diamond set, flexible link bracelet.

Feature; "single line style" fancy bracelet. Comprising, alternating hinged, flexible link components, consisting of, fourteen rectangular-shaped, railed settings, open backed underneath, with a beaded frame, each section, housing two Princess cut diamonds, illusion bead set. Alternate with plain polished, bean-shaped links. The bracelet with a box clasp closure, fitted with a figure 8 safety catch to one side.

Polished finish, stamped "750" - acid tested as 18 carat gold.

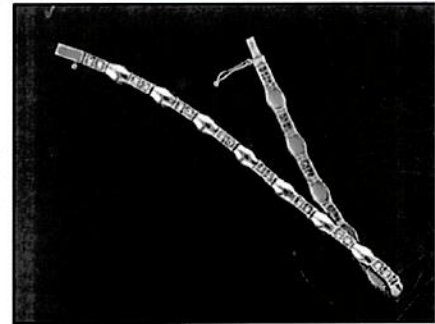
Bracelet dimensions = 18.50cm (total length) x 4.96mm (width) x 3.08mm (depth).

The bracelet contains:

Twenty Eight illusion bead set Princess cut diamonds, clarity is "Si & P1"(mixed), colour is "G to H"(mixed), medium cut quality.
Average dimensions = 2.20mm (L) x 2.00mm (W) x 1.45mm (D-estimated)
Total Weight = 1.40ct (estimated - see NOTE below).

Total Item Weight = 12.94 grams, Total Gemstone Weight = 1.40ct, Total Metal Weight = 12.66 grams (estimated)

NOTE: Gemmological testing, inset. Due to setting constraints, the exact dimensions of the diamonds cannot be ascertained. Therefore weight of the diamonds are very much estimated. For accurate testing, weights, colour, and clarity gradings, the diamonds, would require removal from the settings. The below replacement figure is based upon crafting a similar bracelet employing similar materials and techniques being for a retail insurance purpose only. This figure does not represent the previous selling price of the item and will not be indicative of the resale value of the item.



Insurance Replacement Valuation \$6,950.00

The total of the one item included in this valuation is Six Thousand Nine Hundred and Fifty dollars.

Total Value = \$6,950.00

These items were valued for Cash Converters
by James S Christie F.G.A.A., Dip. D.T., N.C.J.V. R.V. 264

Exchange Rates: US\$ 0.6580 Yen 97.1130 Metal Prices (US\$/ounce) : Gold 2010.80 Silver 22.63 Platinum 901.00

The article(s) described above have been examined and the values given are an expression of our opinion on the date stated. Gemstones have not been removed from the settings for accurate assessment and all grades, weights, and dimensions are approximate, unless otherwise stated. Whilst all care has been taken in making this valuation, no liability is accepted other than to the person to whom the certificate is given for any errors or omissions, including any liability to the person by reason of negligence. This valuation is NOT transferable to any third person or party. Values expressed in Australian dollars (including GST) and are based on current market conditions. This valuation has been made with the standards and methods of the National Council of Jewellery Valuers, using accepted procedures, and systems advocated by this organisation. The values are based on the valuer's judgment of gemstone quality, mounting and manufacturing costs and are made to the best of the valuer's ability. A diamond colour grading of "F" (Rare White Plus) or better and a clarity grading of Vvs (or better), cannot be given to a set diamond. A valuation of a certified diamond is based upon the gradings provided on the certificate. The replacement figure of older cut diamonds is based upon the modern cut equivalent of same estimated weight, colour, and clarity. A valuation for Traditional Retail Insurance Replacement does not infer any saving on a purchase price and will not be indicative of the resale value of the item.

