



Australian Gem Testing Laboratory

AUSTRALIAN DIAMOND & JEWELLERY VALUATION CENTRE

Suite 1205 A, 227 Collins Street, Melbourne, Victoria 3000, Australia.
ABN 52 634 019 237 valuations@mbloodgroup.com Telephone (613) 9650 7221

MC 035900227928

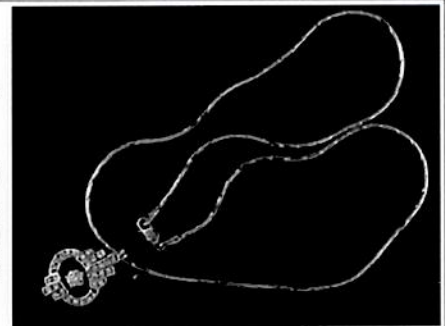
Date: 18 January 2024
Valuation No: JSCCC17659
Customer No: 17749
Page: 1 of 1

Valuation for Traditional Retail Insurance Replacement

Item 1

One, lady's hand-assembled & finished raised, 18ct white and yellow gold & diamond set, pendant, with flexible link necklet.

Feature, "drop style" pendant/necklet. Comprising, an "Art Deco" open style cluster with and articulated, rub-over setting to centre, housing one round brilliant cut diamond, rub-over set. The cluster surround, having thirty round brilliant cut diamonds, tapering sizes, are all channel set. Pendant is open to back, with a roll-over grooved v-shaped bail to top. The pendant is suspended from a faceted flexible snake style chain, with a small parrot clasp closure attached.



Polished finish, stamped "750, Tecrigold,(chain) - acid tested & x-rayed both (chain & pendant) as 18 carat white gold.

Pendant dimensions = 28.00mm (total length) x 15.00mm (width) x 4.94mm (depth).

Chain/necklet dimensions = 40.50cm (total length) x 1.39mm (width) x 1.39mm (depth).

The pendant contains:

One rub over set round brilliant cut diamond, clarity is "Si", colour is "I", medium cut quality.

Dimensions = 4.07mm (Diameter) x 2.48mm (D-estimated)

Total Weight = 0.25ct (estimated - see NOTE below).

Thirty channel set round brilliant cut diamonds, clarity is "Vs & Si"(mixed), colour is "H to I"(mixed), medium cut quality.

Dimensions = 1.55mm (average diameter) x 0.92mm (D-estimated) (smallest)

Dimensions = 1.70mm (average diameter) x 1.04mm (D-estimated) (largest)

Total Weight = 0.50ct (estimated - see NOTE below).

Total Item Weight = 10.31 grams, Total Gemstone Weight = 0.75ct, Total Metal Weight = 10.16 grams (estimated)

NOTE: Limited gemmological testing, inset. Due to setting constraints, the exact dimensions of the gemstones cannot be ascertained. Therefore, weights of the gemstones are very much estimated. For accurate testing, weights, colour, and clarity gradings, the gemstones require removal from the settings. The below replacement figure is based upon crafting a similar pendant/chain/necklet combo, employing similar materials and techniques being for a retail insurance purpose only. This figure does not represent the previous selling price of the item and will not be indicative of the resale value of the item.

Insurance Replacement Valuation \$5,470.00

The total of the one item included in this valuation is Five Thousand Four Hundred and Seventy dollars.

Total Value = \$5,470.00

These items were valued for Cash Converters
by James S Christie F.G.A.A., Dip. D.T., N.C.J.V. R.V. 264

Exchange Rates: US\$ 0.6546 Yen 97.0089 Metal Prices (US\$/ounce) : Gold 2005.30 Silver 22.52 Platinum 883.00

The article(s) described above have been examined and the values given are an expression of our opinion on the date stated. Gemstones have not been removed from the settings for accurate assessment and all grades, weights, and dimensions are approximate, unless otherwise stated. Whilst all care has been taken in making this valuation, no liability is accepted other than to the person to whom the certificate is given for any errors or omissions, including any liability to the person by reason of negligence. This valuation is NOT transferable to any third person or party. Values expressed in Australian dollars (including GST) and are based on current market conditions. This valuation has been made with the standards and methods of the National Council of Jewellery Valuers, using accepted procedures, and systems advocated by this organisation. The values are based on the valuer's judgment of gemstone quality, mounting and manufacturing costs and are made to the best of the valuer's ability. A diamond colour grading of "F" (Rare White Plus) or better and a clarity grading of Vvs (or better), cannot be given to a set diamond. A valuation of a certified diamond is based upon the gradings provided on the certificate. The replacement figure of older cut diamonds is based upon the modern cut equivalent of same estimated weight, colour, and clarity. A valuation for Traditional Retail Insurance Replacement does not infer any saving on a purchase price and will not be indicative of the resale value of the item.

