



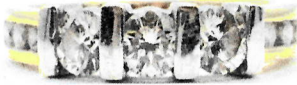
Victoria Jeweller & Watchmaker

415 Albany Highway Victoria Park WA 6100 ABN: 8966762856 PH: 08 93612844
Web: www.victoriajeweller.com.au Email: info@victoriajeweller.com.au

Roseville Enterprises, Joondalup
Ref: 3915-353098

Date: 29 March 2023

CERTIFICATE OF VALUATION



Description: A ladies 18ct stamped 750 15GM yellow gold nine diamond ring.
Setting: Rhodium plate tension channel set in a row.
Shoulders: Channel set in shoulders.
Band: Slightly rounded measures 2.5mm at the base.
Manufacture: Cast.
Ring Size: 1 1/2.

Measurements:

3 x Diamonds – Round brilliant cut, 3.7mm x 3.7mm x 2.3mm, estimated weight 0.19ct each, Clarity: SI2, Colour: C1-C2 Champagne.
6 x Diamonds - Round brilliant cut, 2.0mm, estimated weight 0.03ct each, Clarity: SI, Colour: C1-C2 Champagne.

Due to the stones being set the weight, clarity and colour are estimated.
Total Diamond Weight: 0.75ct.
Total Weight: 4.00 grams.

Valuation based on retail replacement in a traditional bricks and mortar retail outlet.

Retail Replacement Value

\$3,180.00

The total valuation of this item is three thousand one hundred and eighty dollars.

Exchange Rate: US\$0.67
Metal Prices: Aus \$: Gold - \$2,952.54

R9Macham

Valued by Rebecca Macham FGAA. NCJV Reg Valuer WA0063



Gemstones have not been removed from the settings for accurate assessment, all grades and weights are approximate. Valuation is based on the current value at the time of valuation and includes Australian Government Taxes where applicable. This valuation is not suitable for any purpose other than the purpose(s) stated above and should not be relied on by an entity besides the addressee unless specifically noted.