



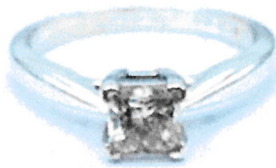
# Victoria Jeweller & Watchmaker

415 Albany Highway Victoria Park WA 6100 ABN: 8966762856 PH: 08 93612844  
Web: [www.victoriajeweller.com.au](http://www.victoriajeweller.com.au) Email: [info@victoriajeweller.com.au](mailto:info@victoriajeweller.com.au)

Roseville Enterprises, Joondalup  
Ref: 3768-346120

Date: 21 December 2022

## CERTIFICATE OF VALUATION



**Description:** A ladies 18ct, stamped 750 Michael Hill white gold diamond solitaire ring. The diamond is four corner claw collet set. The park lane design shoulders are tapered and the band is flat. The ring is of cast manufacture. Ring Size: M.

**Measurements:**

- 1 x Diamond – Princess cut.
- 4.71mm x 4.87mm x 3.52mm.
- Actual weight 0.72ct.
- Clarity P1, Colour G as per ADGL diamond report.
- Laser Inscribed Girdle: ADGL H47605 Michael Hill.

Due to the stone being set the weight, clarity and colour are estimated.  
Total Diamond Weight: 0.72ct.  
Total Weight: 4.30 grams.

Valuation based on retail replacement in a multi store Perth retail outlet.

**Retail Replacement Value**

**\$6,435.00**

The total valuation of this item is six thousand four hundred and thirty five dollars.

Exchange Rate: US\$0.66  
Metal Prices: Aus \$ : Gold - \$2,730.54

*R9Macham*

Valued by Rebecca Macham FGAA. NCJV Reg Valuer WA0063



Gemstones have not been removed from the settings for accurate assessment, all grades and weights are approximate. Valuation is based on the current value at the time of valuation and includes Australian Government Taxes where applicable. This valuation is not suitable for any purpose other than the purpose(s) stated above and should not be relied on by an entity besides the addressee unless specifically noted.



**ADGL**  
Australian Diamond Grading Laboratory  
www.adgl.com.au

Cut grade calculated by  
GIA Facetware™

The following were, at the time of examination by the Australian Diamond Grading Laboratory (ADGL), the characteristics of the diamond described herein using the following equipment: 10x magnification (fully corrected triplet loupe and binocular microscope), diamondlite, diamond colour master stones and digital diamond colour grading machine, ultraviolet lamps, millimetre gauge, carat balance, OGI MegaScope Proportion Analyser and ancillary instruments as necessary.

This diamond has been graded under the internationally recognised standards of the ICA; Carat Weight, Colour, Clarity and Cut. This report is not a valuation or appraisal. The recipient of the report may wish to consult an accredited jeweller or gemmologist about the importance and interrelationship of cut, colour, clarity and carat weight.

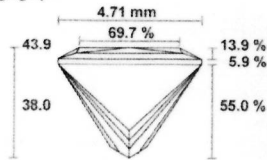
The characteristics for this diamond have been established in accordance with strict guidelines for quality control and using scientific methods together with state of the art technology.

CERTIFICATE NO. H47605

13/02/2014

SHAPE PRINCESS  
CARAT WEIGHT 0.72 ct  
MEASUREMENTS (mm) 4.71 - 4.87  
TABLE SIZE 69.7% EX  
TOTAL DEPTH 74.8% VG  
CROWN ANGLE 43.9  
CROWN HEIGHT 13.9% EX  
PAVIL ANGLE 38.0  
PAVIL DEPTH 55.0% EX  
CULET 0.1% EX

Average graph



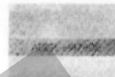
CUT PROPORTION VERY GOOD  
CUT SYMMETRY VERY GOOD  
POLISH VERY GOOD

COLOUR G  
CLARITY I1

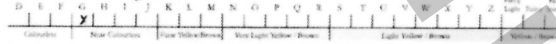
COMMENTS Inscribed ADGL H47605 & michael hill

SIGNATURE

*[Signature]*  
M. Muller B.Comm. G.I.A. (DIA) (1963)



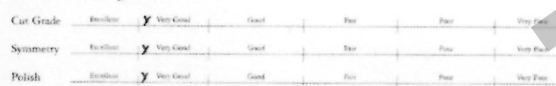
GIA Colour Grading Scale



GIA Clarity Grading Scale



GIA Cut Grading Scale



Diamond Brilliance Grading Scale

