



VICTORIA JEWELLER & WATCHMAKER

ABN 89 626 762 856 Tel: (08) 9361 2844

415 Albany Highway, Victoria Park, W.A. 6100

Web: www.victoriajeweller.com.au Email: info@victoriajeweller.com.au



TECHNICAL MERIT REPORT

NAME: Cash Converters
ADDRESS: Joondalup

DATE: 7th September 2022
REF: Stock # 339683

DESCRIPTION: GENTS OMEGA CONSTELLATION QUARTZ WATCH

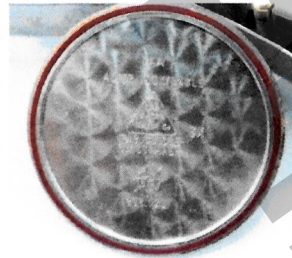
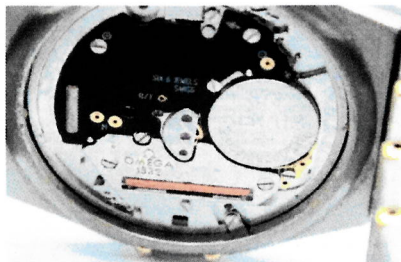
Weight: 82.71

Metal: Stainless steel & 18ct Yellow Gold

Model/Ref: 396.1201

Serial/Case: 57034251

CASE: 33mm	MOVEMENT: Swiss made Omega Cal. 1532 6 Jewel quartz
BEZEL: 18ct Yellow gold with black roman numerals	CROWN: 18ct yellow gold corrugated pull push
LUGS: Integrated	PUSH BUTTONS: N/A
GLASS: Sapphire crystal	BAND: Stainless steel & 18ct yellow gold
DIAL: Cream Guilloche	CLASP: Stainless steel folding Ref # 1552-862 with 18ct gold Omega logo
HANDS: Dauphine	PRINTED ON THE DIAL: Omega Constellation – Swiss Made
INDICES: Baton	CIRCA: Approximately 1998
SECONDS HAND: N/A	CONDITION: Fair – obvious scratches and signs of wear
SUBSIDIARY DIALS: N/A	ACCESSORIES: None
DAY/DATE: Date @ 3 o'clock position	



We have examined the articles in the above schedule and in our opinion the watch and movement are original Omega and the watch is in working condition. Exact replacement may be difficult.

Signed:

Teena A Fletcher FGAA, Dip Gem, NCJV Reg. Val No: W0084
NCJV Registered Valuer of W.A.
Fellow of Gemmological Association of Australia



This valuation is not suitable for any other purpose than the purpose(s) stated above and should not be relied on by an entity besides the addressee unless specifically noted.