



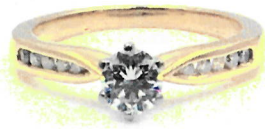
Victoria Jeweller & Watchmaker

415 Albany Highway Victoria Park WA 6100 ABN: 8966762856 PH: 08 93612844
Web: www.victoriajeweller.com.au Email: info@victoriajeweller.com.au

Roseville Enterprises, Joondalup
Ref: 3446-328211

Date: 25 January 2022

CERTIFICATE OF VALUATION



Description: A ladies 18ct, stamped 750 MHJ .50 yellow gold eleven diamond ring. The large diamond is white gold six claw collet set in the centre and the smaller diamonds are channel set in the upraised, tapered shoulders. The band is slightly rounded and the ring is cast – hand assembled.
Ring Size: O1/2.

Measurements:

- 1 x Diamond – round brilliant cut, 4.8mm x 4.8mm, estimated weight 0.39ct, Clarity P1, Colour F.
- 8 x Diamonds – round brilliant cut, 1.5mm to 1.6mm, estimated weight 0.015ct each, Clarity P1-P2, Colour G-H.
- 2 x Diamonds – round brilliant cut, 1.3mm, estimated weight 0.01ct each, Clarity P1-P2, Colour G-H.

Due to the stones being set the weight, clarity and colour are estimated.
Total Diamond Weight: 0.53ct.
Total Weight: 3.70 grams.

Valuation based on retail replacement in a multi store retail outlet.

Retail Replacement Value

\$3,515.00

The total valuation of this item is three thousand five hundred and fifteen dollars.

Exchange Rate: US\$0.71
Metal Prices: Aus \$: Gold - \$2,591.57

Rg Macham

Valued by Rebecca Macham FGAA. NCJV Reg Valuer WA0063



Gemstones have not been removed from the settings for accurate assessment, all grades and weights are approximate. Valuation is based on the current value at the time of valuation and includes Australian Government Taxes where applicable. This valuation is not suitable for any purpose other than the purpose(s) stated above and should not be relied on by an entity besides the addressee unless specifically noted.