



Australian Gem Testing Laboratory

AUSTRALIAN DIAMOND & JEWELLERY VALUATION CENTRE

Suite 1205 A, 227 Collins Street, Melbourne, Victoria 3000, Australia.
ABN 52 634 019 237 valuations@mbloodgroup.com Telephone (613) 9650 7221

WD 028300119535

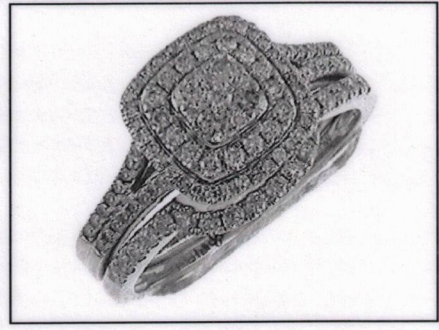
Date: 28 November 2023
Valuation No: ASMCC15850
Customer No: 15014
Page: 1 of 1

Valuation for Traditional Retail Insurance Replacement

Item 1

One, hand assembled 14ct white gold, diamond set, multi-stone, ring set, of cast construction. The set comprising a 14ct white gold diamond set engagement ring with a fitted and matching 14ct white gold diamond set wedding ring. Each ring having a plain, narrow, low half round, tapered band with a combined basal width of 3.40mm x 1.42mm in depth.

The engagement ring has a central cushion shaped top plate, housing four round brilliant cut diamonds, claw set. Surrounding has one inner row of round brilliant diamonds, and one outer row of single cut diamonds, all claw set. The top plate is supported with a pierced decorative underrail and gallery, and in between the 'split' style shoulders. The fitted and matching wedding ring has one row of round brilliant cut diamonds, spanning across the top of the band, and slightly graduating in size, claw set. The wedding ring sits alongside the engagement ring above. There is a channel in the centre of the band. There are a total of thirty-five round brilliant cut diamonds, and a total of sixty-six single cut diamonds.



Polished finish. Stamped '14K michael hill 0.75TDW 0.25TDW' - acid tested as 14 carat gold. Ring size T. The ring set contains:

Four claw set round brilliant cut diamonds, clarity is "Si & P1 & P2" (mixed), colour is "H to I" (mixed).
Dimensions (average) = 2.45mm(Dia) x 1.49mm(D-estimated) x 2%(Girdle Thickness)
Total Weight = 0.22ct (estimated - see NOTE below)

Thirty Five claw set round brilliant cut diamonds, clarity is "Si & P1 & P2 & P3" (mixed), colour is "G to I" (mixed).
Dimensions = 1.30mm(Dia) x 0.79mm(D-estimated) x 2%(Girdle Thickness) (smallest)
Dimensions = 1.70mm(Dia) x 1.04mm(D-estimated) x 2%(Girdle Thickness) (largest)
Total Weight = 0.38ct (estimated - see NOTE below)

Sixty Six claw set single cut diamonds, clarity is "Si & P1" (mixed), colour is "G to I" (mixed).
Dimensions = 0.95mm (diameter) (smallest)
Dimensions = 1.10mm (diameter) (largest)
Total Weight = 0.40ct (estimated - see NOTE below)

Total Item Weight = 6.84 grams Total Gemstone Weight = 1.00ct Total Metal Weight = 6.64 grams (estimated)

NOTE: Due to setting constraints, the exact dimensions of the gemstones cannot be ascertained. Therefore, weights of the gemstones are very much estimated. For accurate testing, weights, colour, and clarity gradings, the gemstones require removal from the settings. The below replacement figure is based upon crafting a similar ring set employing similar materials and techniques being for a retail insurance purpose only. This figure does not represent the previous selling price of the item and will not be indicative of the resale value of the item.

Insurance Replacement Valuation \$4,425.00

The total of the one item included in this valuation is Four Thousand Four Hundred and Twenty Five dollars.

Total Value = \$4,425.00

These items were valued for Cash Converters

by Amina S McPhee F.G.A.A., Dip. D.T., N.C.J.V. R.V.

Exchange Rates: US\$ 0.6607 Yen 98.2108 Metal Prices (US\$/ounce) : Gold 2013.30 Silver 24.73 Platinum 929.00

The article(s) described above have been examined and the values given are an expression of our opinion on the date stated. Gemstones have not been removed from the settings for accurate assessment and all grades, weights, and dimensions are approximate, unless otherwise stated. Whilst all care has been taken in making this valuation, no liability is accepted other than to the person to whom the certificate is given for any errors or omissions, including any liability to the person by reason of negligence. This valuation is NOT transferable to any third person or party. Values expressed in Australian dollars (including GST) and are based on current market conditions. This valuation has been made with the standards and methods of the National Council of Jewellery Valuers, using accepted procedures, and systems advocated by this organisation. The values are based on the valuer's judgment of gemstone quality, mounting and manufacturing costs and are made to the best of the valuer's ability. A diamond colour grading of "F" (Rare White Plus) or better and a clarity grading of Vvs (or better), cannot be given to a set diamond. A valuation of a certified diamond is based upon the gradings provided on the certificate. The replacement figure of older cut diamonds is based upon the modern cut equivalent of same estimated weight, colour, and clarity. A valuation for Traditional Retail Insurance Replacement does not infer any saving

