



Elenium

Manufacturing Jeweller & Registered Valuer
ABN: 67 365 683 892

Telephone: 0417 754 510
Email: admin@eleniumjewellery.com

ON BEHALF OF TENERI PTY. LTD. LOGAN



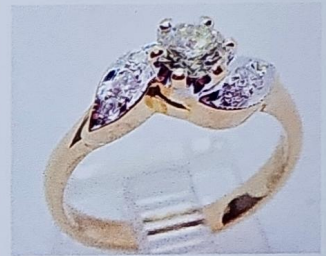
THIS VALUATION IS FOR Retail Replacement For Insurance Purposes
FOR REPLACEMENT AT A STANDARD MARKET RETAIL OUTLET UNLESS OTHERWISE SPECIFIED.
PRICES BASED ON CURRENT VALUE AT THE UNDERMENTIONED DATE AND INCLUDES AUSTRALIAN
GOVERNMENT TAXES WHERE APPLICABLE, AND SHOULD NOT BE CONSIDERED AS RETAIL SALES VALUE.

VALUATION NO.
55737

STORE NO.	026900594288	ITEM NO.		DAILY RATE	Gold \$2339.270 USD/oz USD \$ 0.663
-----------	--------------	----------	--	------------	--

Description

1 x 18ct yellow gold wrap around thickened top style dress ring.
Set with 1 x 4.40mm [0.35mct] round brilliant cut diamond set in a raised 6 claw setting with 2 x 2.00mm [0.035mct] round brilliant cut diamonds mill grain set and rhodium plated in the leaf patterned shoulders.
As per the photo.
The shank is rounded 2.35mm wide.



Total Weight : 3.52 gram(s)
Metal Quality : Stamped = 750
Method of Manufacture : Cast

Qty	Type	Colour	Clarity /Grade	Make	Tot. Est. Weight
6	Diamond	H/I	Si		0.130 ct(s)
1	Diamond	TLC	Si1		0.350 ct(s)

This valuation is based on retail replacement for insurance purposes only in a traditional single retail outlet in the Brisbane Metropolitan area

I have examined the articles in the above schedule and in my opinion the total of
\$3,099.89 In Words: Three Thousand Ninety Nine Dollars and 89 Cents
represents the value of such articles only for purposes stated.

Dated this 27th day of May 20 24

Assessed by Marlon Ostergaard F.G.A F.G.A.A. Dip. D.T.

Signed  Reg. No. Q185

Registered member of National Council of Jewellery Valuers (NCJV). In the event of loss enquiries are welcomed regarding the procedure in making a claim and to furnish a quotation for replacement.

The articles described above have been examined and the values given are an expression of our opinion. Gemstones have not been removed from settings for accurate assessment. All grades and weights are approximate. Whilst all care has been taken in making this valuation, no liability is accepted for any errors or omissions in the certificate, including any liability to any person by reason or negligence (other than the person to whom the certificate is given). Values expressed in Australian dollars based on current market conditions may or may not reflect retail prices.

