



# Australian Gem Testing Laboratory

**AUSTRALIAN DIAMOND & JEWELLERY VALUATION CENTRE**

Suite 1205 A, 227 Collins Street, Melbourne, Victoria 3000, Australia.  
ABN 52 634 019 237 valuations@mbloodgroup.com Telephone (613) 9650 7221

PD 001800687889

Date: 14 February 2024  
Valuation No: ASMCC16194  
Customer No: 15360  
Page: 1 of 1

## Valuation for Traditional Retail Insurance Replacement

### Item 1

One, 9ct rose gold and rhodium plated, diamond set, multistone ring, of cast construction.

Plain, narrow, low half round, tapered band of 2.20mm width (at base) x 1.46mm depth, with a hollow top and shoulders, open back settings, and a cut out curved underrail.

Feature 'cross over' style ring, with six overlapping rows of single cut diamonds. The central cluster of fifteen single cut diamonds, vary in size and bead set, with black rhodium plating. There are a total of one hundred and four single cut diamonds, in the remaining rows. Rhodium plating to the setting areas. The settings are supported with a pierced decorative gallery, and in between the shoulders of the plain and polished band.

Polished finish. Stamped '9K' - acid tested as 9 carat gold. Ring size: S.

The ring contains:

Thirty Five bead set single cut diamonds, clarity is "Si & P1" (mixed), colour is "brown tint" (mixed).

Dimensions = 1.10mm (diameter) (smallest)

Dimensions = 1.35mm (diameter) (largest)

Total Weight = 0.20ct (estimated - see NOTE below)

One Hundred And Four bead set single cut diamonds, clarity is "Si & P1" (mixed), colour is "G to J" (mixed).

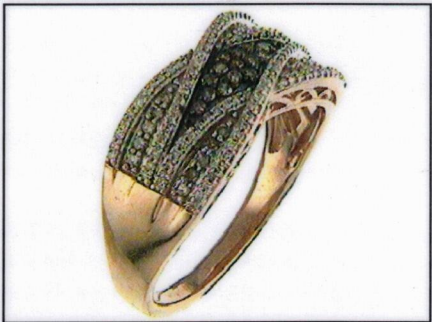
Dimensions = 0.70mm (diameter) (smallest)

Dimensions = 0.90mm (diameter) (largest)

Total Weight = 0.30ct (estimated - see NOTE below)

Total Item Weight = 5.40 grams Total Gemstone Weight = 0.50ct Total Metal Weight = 5.30 grams (estimated)

NOTE: Due to setting constraints, the exact dimensions of the gemstones cannot be ascertained. Therefore, weights of the gemstones are very much estimated. For accurate testing, weights, colour, and clarity gradings, the gemstones require removal from the settings. The below replacement figure is based upon crafting a similar ring employing similar materials and techniques being for a retail insurance purpose only. This figure does not represent the previous selling price of the item and will not be indicative of the resale value of the item.



**Insurance Replacement Valuation \$2,900.00**

The total of the one item included in this valuation is Two Thousand Nine Hundred dollars.

**Total Value = \$2,900.00**

These items were valued for Cash Converters

by Amina S McPhee F.G.A.A., Dip. D.T., N.C.J.V. R.V.

Exchange Rates: US\$ 0.6446 Yen 97.2322 Metal Prices (US\$/ounce) : Gold 1991.60 Silver 21.97 Platinum 871.00

The article(s) described above have been examined and the values given are an expression of our opinion on the date stated. Gemstones have not been removed from the settings for accurate assessment and all grades, weights, and dimensions are approximate, unless otherwise stated. Whilst all care has been taken in making this valuation, no liability is accepted other than to the person to whom the certificate is given for any errors or omissions, including any liability to the person by reason of negligence. This valuation is NOT transferable to any third person or party. Values expressed in Australian dollars (including GST) and are based on current market conditions. This valuation has been made with the standards and methods of the National Council of Jewellery Valuers, using accepted procedures, and systems advocated by this organisation. The values are based on the valuer's judgment of gemstone quality, mounting and manufacturing costs and are made to the best of the valuer's ability. A diamond colour grading of "F" (Rare White Plus) or better and a clarity grading of Vvs (or better), cannot be given to a set diamond. A valuation of a certified diamond is based upon the gradings provided on the certificate. The replacement figure of older cut diamonds is based upon the modern cut equivalent of same estimated weight, colour, and clarity. A valuation for Traditional Retail Insurance Replacement does not infer any saving on a purchase price and will not be indicative of the resale value of the item.

