



Australian Gem Testing Laboratory

AUSTRALIAN DIAMOND & JEWELLERY VALUATION CENTRE

Suite 1205 A, 227 Collins Street, Melbourne, Victoria 3000, Australia.
ABN 52 634 019 237 valuations@mbloodgroup.com Telephone (613) 9650 7221

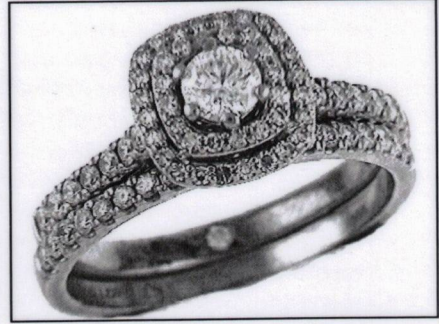
PD 001800663909

Date: 8 September 2022
Valuation No: JSCCC14306
Customer No: 14348
Page: 1 of 1

Valuation for Traditional Retail Insurance Replacement

Item 1

One, lady's, 2pce ring set, hand-assembled raised, 18ct yellow gold, fully rhodium plated & diamond set, multistone rings. Plain, narrow, low half round, tapered bands, measure combined basal width 3.98mm x 1.26mm depth, with curved underrails. Comprising, engagement ring, a round brilliant cut diamond inset to inner shank. Curved underrail, bead set with single diamonds to each side wall. Upswept extended shoulders, each set with round brilliant cut diamonds. Feature square cushion-shaped cluster setting, claw set to centre, housing one round brilliant cut diamond, (laser inscribed & certified). Stepped double row surround of single cut diamonds, bead set. A complimenting band, with a single row across the top contains round brilliant cut diamonds, claw set. The inner shank of the band, having one round brilliant cut diamond, inset.



Polished finish, stamped "unique love 18k" - acid tested both as 18 carat gold. Finger size = M1/2.

The ring set contains;

One claw set round brilliant cut diamond, clarity is "P1", colour is "G", very good cut quality.
Dimensions = 4.03mm - 4.00mm (Diameter) x 2.50mm (D-estimated)
Total Weight = 0.25ct (known weight - see NOTE below).

Thirty Five claw set round brilliant cut diamonds, clarity is "P1 & P2"(mixed), colour is "G to H"(mixed), medium cut quality.
Dimensions = 1.50mm (average diameter) x 0.92mm(D-estimated)
Total Weight = 0.47ct (estimated - see NOTE below).

Fifty Six bead set single cut diamonds, clarity is "Si & P1"(mixed), colour is "G to I"(mixed), medium cut quality.
Dimensions = 1.00mm (average diameter)
Total Weight = 0.28ct (estimated - see NOTE below).

Total Item Weight = 5.40 grams, Total Gemstone Weight = 1.00ct, Total Metal Weight = 5.20 grams (estimated)

NOTE: Limited gemmological testing, inset. Due to setting constraints, the exact dimensions of the gemstones cannot be ascertained. Therefore, weights of the gemstones are very much estimated. For accurate testing, weights, colour, and clarity gradings, the gemstones require removal from the settings. The below replacement figure is based upon crafting a similar 2pce ring set, employing similar materials and techniques being for a retail insurance purpose only. This figure does not represent the previous selling price of the item and will not be indicative of the resale value of the item.

Insurance Replacement Valuation \$4,450.00

The total of the one item included in this valuation is Four Thousand Four Hundred and Fifty dollars.

Total Value = \$4,450.00

These items were valued for Cash Converters
by James S Christie F.G.A.A., Dip. D.T., N.C.J.V. R.V. 264

Exchange Rates: US\$ 0.6767 Yen 63.0000 Metal Prices (US\$/ounce) : Gold 1719.60 Silver 18.56 Platinum 878.00

The article(s) described above have been examined and the values given are an expression of our opinion on the date stated. Gemstones have not been removed from the settings for accurate assessment and all grades, weights, and dimensions are approximate, unless otherwise stated. Whilst all care has been taken in making this valuation, no liability is accepted other than to the person to whom the certificate is given for any errors or omissions, including any liability to the person by reason of negligence. This valuation is NOT transferable to any third person or party. Values expressed in Australian dollars (including GST) and are based on current market conditions. This valuation has been made with the standards and methods of the National Council of Jewellery Valuers, using accepted procedures, and systems advocated by this organisation. The values are based on the valuer's judgment of gemstone quality, mounting and manufacturing costs and are made to the best of the valuer's ability. A diamond colour grading of "F" (Rare White Plus) or better and a clarity grading of Vvs (or better), cannot be given to a set diamond. A valuation of a certified diamond is based upon the gradings provided on the certificate. The replacement figure of older cut diamonds is based upon the modern cut equivalent of same estimated weight, colour, and clarity. A valuation for Traditional Retail Insurance Replacement does not infer any saving on a purchase price and will not be indicative of the resale value of the item.

