

# Australian Gem Testing Laboratory

## AUSTRALIAN DIAMOND & JEWELLERY VALUATION CENTRE

ABN: 82 674 987 449 MARGARET M BLOOD GROUP PTY LTD ACN: 674 987 449  
Suite 1205 A, 227 Collins Street, Melbourne, Victoria 3000, Australia.  
valuations@mbloodgroup.com Telephone (613) 9650 7221 www.agtl.com.au

CW 001300317784

Date: 7 August 2024  
Valuation No: ASMCC17602  
Customer No: 16789  
Page: 1 of 1

### Valuation for Traditional Retail Insurance Replacement

#### Item 1

One, 18ct yellow gold, gem set, multistone ring, of handmade construction.

Plain, wide, low half round, tapered band of 5.01mm width (at base) x 1.08mm depth, with open back settings, and a curved underrail.

Feature rectangle top plate, housing one row of three old cut diamonds, graduating in size, largest to the centre, claw set. Framing the central settings on both sides, is one vertical row of three round brilliant cut diamonds, varying in size, and claw set. The top plate is secured between the tapering shoulders, of the plain and polished band.

Polished finish.

Stamped '18ct' - acid tested as 18 carat gold.

Ring size: W.

The ring contains:

Three claw set old cut diamonds, clarity is "Vs & Si & P1" (mixed), colour is "G to H" (mixed).

Dimensions = 3.98mm(L) x 3.54mm(W) x 2.30mm(D-estimated) (smallest)

Dimensions = 4.53mm(L) x 4.02mm(W) x 2.81mm(D-estimated) (largest)

Total Weight = 0.72ct (estimated - see NOTE below)

Six claw set round brilliant cut diamonds, clarity is "Si & P1 & P2" (mixed), colour is "G to I" (mixed).

Dimensions = 2.10mm(Dia) x 1.28mm(D-estimated) x 2%(Girdle Thickness) (smallest)

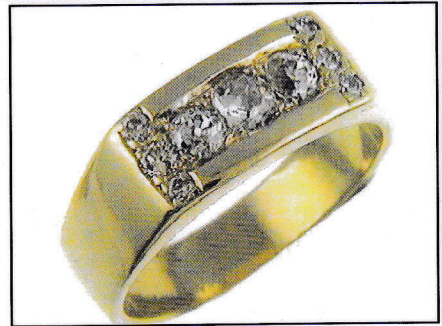
Dimensions = 2.65mm(Dia) x 1.62mm(D-estimated) x 2%(Girdle Thickness) (largest)

Total Weight = 0.28ct (estimated - see NOTE below)

Total Item Weight = 12.98 grams Total Gemstone Weight = 1.00ct Total Metal Weight = 12.78 grams (estimated)

NOTE: Due to setting constraints, the exact dimensions of the gemstones cannot be ascertained. Therefore, weights of the gemstones are very much estimated. For accurate testing, weights, colour, and clarity gradings, the gemstones require removal from the settings. The below replacement figure is based upon crafting a similar ring using all modern round brilliant cut diamonds of the same estimated weight, colour and clarity employing similar materials and techniques being for a retail insurance purpose only. This figure does not represent the previous selling price of the item and will not be indicative of the resale value of the item.

**Insurance Replacement Valuation \$7,165.00**



The total of the one item included in this valuation is Seven Thousand One Hundred and Sixty Five dollars.

**Total Value = \$7,165.00**

These items were valued for Cash Converters

by Amina S McPhee F.G.A.A., Dip. D.T., N.C.J.V. R.V.

Exchange Rates: US\$ 0.6521 Yen 94.2831 Metal Prices (US\$/ounce) : Gold 2391.70 Silver 27.07 Platinum 923.00

The article(s) described above have been examined and the values given are an expression of our opinion on the date stated. Gemstones have not been removed from the settings for accurate assessment and all grades, weights, and dimensions are approximate, unless otherwise stated. Whilst all care has been taken in making this valuation, no liability is accepted other than to the person to whom the certificate is given for any errors or omissions, including any liability to the person by reason of negligence. This valuation is NOT transferable to any third person or party. Values expressed in Australian dollars (including GST) and are based on current market conditions. This valuation has been made with the standards and methods of the National Council of Jewellery Valuers, using accepted procedures, and systems advocated by this organisation. The values are based on the valuer's judgment of gemstone quality, mounting and manufacturing costs and are made to the best of the valuer's ability. A diamond colour grading of "F" (Rare White Plus) or better and a clarity grading of Vvs (or better), cannot be given to a set diamond. A valuation of a certified diamond is based upon the gradings provided on the certificate. The replacement figure of older cut diamonds is based upon the modern cut equivalent of same estimated weight, colour, and clarity. A valuation for Traditional Retail Insurance Replacement does not infer any saving on a purchase price and will not be indicative of the resale value of the item.

