

Australian Gem Testing Laboratory

AUSTRALIAN DIAMOND & JEWELLERY VALUATION CENTRE

ABN: 82 674 987 449 MARGARET M BLOOD GROUP PTY LTD ACN: 674 987 449
Suite 1205 A, 227 Collins Street, Melbourne, Victoria 3000, Australia.
valuations@mbloodgroup.com Telephone (613) 9650 7221 www.agtl.com.au

CW 001300314915

Date: 15 July 2024
Valuation No: JSCCC18483
Customer No: 18583
Page: 1 of 1

Valuation for Traditional Retail Insurance Replacement

Item 1

One, raised 18ct white gold & gemset, multistone ring, of cast construction. Plain, narrow, low half round, tapered band, measures 2.55mm width (at base) x 0.97mm depth, with curved underrail, hollowed out shoulders underneath.

Feature, "dress style" ring design. Comprising, a raised end setting to top with side wall stones. Housing, a cushion shaped topaz, end set, flush to metal. Rub-over setting to side wall contains two Princess cut diamonds, rub-over set. The extended shoulders, of the band tapers up to the top, from both sides.

Polished finish, stamped "750, HJ assay purity mark" - acid tested as 18 carat gold.

Finger size = N1/2.

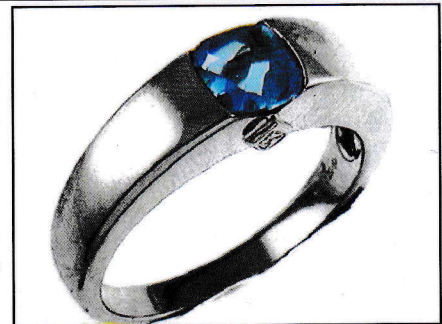
The ring contains;

One end set mixed cut square cushion blue topaz, colour is "medium".
Dimensions = 5.89mm (L) x 5.86mm (W) x 3.98mm (D-estimated)
Total Weight = 1.12ct (estimated - see NOTE below).

Two rub-over set Princess cut diamonds, clarity is "Si", colour is "H to I". medium cut quality.
Dimensions = 1.60mm (L) x 1.60mm (W) x 1.14mm (D-estimated)
Total Weight = 0.05ct (estimated - see NOTE below).

Total Item Weight = 5.70 grams, Total Gemstone Weight = 1.17ct, Total Metal Weight = 5.47 grams (estimated)

NOTE: Limited gemmological testing, inset. Due to setting constraints, the exact dimensions of the gemstones cannot be ascertained. Therefore, weights of the gemstones are very much estimated. For accurate testing, weights, colour, and clarity gradings, the gemstones require removal from the settings. The below replacement figure is based upon crafting a similar ring employing similar materials and techniques being for a retail insurance purpose only. This figure does not represent the previous selling price of the item and will not be indicative of the resale value of the item.



Insurance Replacement Valuation \$2,460.00

The total of the one item included in this valuation is Two Thousand Four Hundred and Sixty dollars.

Total Value = \$2,460.00

These items were valued for Cash Converters
by James S Christie F.G.A.A., Dip. D.T., N.C.J.V. R.V. 264

Exchange Rates: US\$ 0.6773 Yen 107.0844 Metal Prices (US\$/ounce) : Gold 2411.50 Silver 30.84 Platinum 1011.00

The article(s) described above have been examined and the values given are an expression of our opinion on the date stated. Gemstones have not been removed from the settings for accurate assessment and all grades, weights, and dimensions are approximate, unless otherwise stated. Whilst all care has been taken in making this valuation, no liability is accepted other than to the person to whom the certificate is given for any errors or omissions, including any liability to the person by reason of negligence. This valuation is NOT transferable to any third person or party. Values expressed in Australian dollars (including GST) and are based on current market conditions. This valuation has been made with the standards and methods of the National Council of Jewellery Valuers, using accepted procedures, and systems advocated by this organisation. The values are based on the valuer's judgment of gemstone quality, mounting and manufacturing costs and are made to the best of the valuer's ability. A diamond colour grading of "F" (Rare White Plus) or better and a clarity grading of Vvs (or better), cannot be given to a set diamond. A valuation of a certified diamond is based upon the gradings provided on the certificate. The replacement figure of older cut diamonds is based upon the modern cut equivalent of same estimated weight, colour, and clarity. A valuation for Traditional Retail Insurance Replacement does not infer any saving on a purchase price and will not be indicative of the resale value of the item.

