

# Australian Gem Testing Laboratory

**AUSTRALIAN DIAMOND & JEWELLERY VALUATION CENTRE**

ABN: 82 674 987 449 MARGARET M BLOOD GROUP PTY LTD ACN: 674 987 449  
Suite 1205 A, 227 Collins Street, Melbourne, Victoria 3000, Australia.  
valuations@mbloodgroup.com Telephone (613) 9650 7221 www.agtl.com.au

CW 001300309269

Date: 18 April 2024  
Valuation No: ASMCC16709  
Customer No: 15885  
Page: 1 of 1

## Valuation for Traditional Retail Insurance Replacement

### Item 1

One, 18ct yellow gold and 18ct white gold and rhodium plated, diamond set, multistone, 'cluster' style ring, of hand-assembled construction.

Plain, narrow, low half round, tapered band of 3.33mm width (at base) x 1.12mm depth, with a hollow top and shoulders, open back settings, and a cut out curved underrail.

Feature white gold square top plate, with a central bezel, housing four Princess cut diamonds, invisibly set. Surrounding is one row of twenty round brilliant cut diamonds, claw set. The top plate is supported with a decorative pierced gallery, and in between the shoulders of the plain and polished yellow gold band. Each of the shoulders house one inner row of seven baguette cut diamonds, graduating in size, and channel set. There are also two outer rows of eight round brilliant cut diamonds, claw set. Rhodium plating to the diamond setting areas.

Polished finish. Stamped '750 JP88' - acid tested as 18 carat gold. Ring size: S.

The ring contains:

Four invisibly set Princess cut diamonds, clarity is "Vs & Si" (mixed), colour is "H".

Dimensions = 2.19mm(L) x 2.08mm(W) x 1.48mm(D-estimated) x 2%(Girdle Thickness)

Total Weight = 0.20ct (estimated - see NOTE below)

Fifty Two claw set round brilliant cut diamonds, clarity is "Vs & Si" (mixed), colour is "H to I" (mixed).

Dimensions = 1.05mm(Dia) x 0.64mm(D-estimated) x 2%(Girdle Thickness) (smallest)

Dimensions = 1.20mm(Dia) x 0.73mm(D-estimated) x 2%(Girdle Thickness) (largest)

Total Weight = 0.35ct (estimated - see NOTE below)

Fourteen channel set baguette cut diamonds, clarity is "Vs & Si" (mixed), colour is "H to I" (mixed).

Dimensions = 1.75mm(L) x 1.15mm(W) x 0.84mm(D-estimated) x 2%(Girdle Thickness) (smallest)

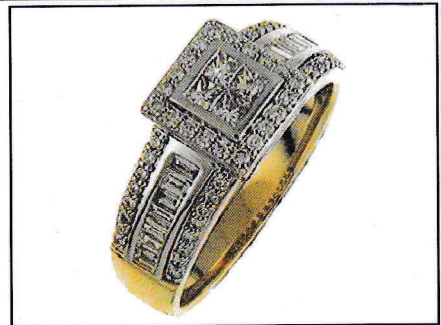
Dimensions = 2.25mm(L) x 1.10mm(W) x 0.80mm(D-estimated) x 2%(Girdle Thickness) (largest)

Total Weight = 0.20ct (estimated - see NOTE below)

Total Item Weight = 6.36 grams Total Gemstone Weight = 0.75ct Total Metal Weight = 6.21 grams (estimated)

NOTE: Due to setting constraints, the exact dimensions of the gemstones cannot be ascertained. Therefore, weights of the gemstones are very much estimated. For accurate testing, weights, colour, and clarity gradings, the gemstones require removal from the settings. The below replacement figure is based upon crafting a similar ring employing similar materials and techniques being for a retail insurance purpose only. This figure does not represent the previous selling price of the item and will not be indicative of the resale value of the item.

**Insurance Replacement Valuation \$4,670.00**



The total of the one item included in this valuation is Four Thousand Six Hundred and Seventy dollars.

**Total Value = \$4,670.00**

These items were valued for Cash Converters

by Amina S McPhee F.G.A.A., Dip. D.T., N.C.J.V. R.V.

Exchange Rates: US\$ 0.6436 Yen 99.3856 Metal Prices (US\$/ounce) : Gold 2372.30 Silver 28.31 Platinum 949.00

The article(s) described above have been examined and the values given are an expression of our opinion on the date stated. Gemstones have not been removed from the settings for accurate assessment and all grades, weights, and dimensions are approximate, unless otherwise stated. Whilst all care has been taken in making this valuation, no liability is accepted other than to the person to whom the certificate is given for any errors or omissions, including any liability to the person by reason of negligence. This valuation is NOT transferable to any third person or party. Values expressed in Australian dollars (including GST) and are based on current market conditions. This valuation has been made with the standards and methods of the National Council of Jewellery Valuers, using accepted procedures, and systems advocated by this organisation. The values are based on the valuer's judgment of gemstone quality, mounting and manufacturing costs and are made to the best of the valuer's ability. A diamond colour grading of "F" (Rare White Plus) or better and a clarity grading of Vvs (or better), cannot be given to a set diamond. A valuation of a certified diamond is based upon the gradings provided on the certificate. The replacement figure of older cut diamonds is based upon the modern cut equivalent of same estimated weight, colour, and clarity. A valuation for Traditional Retail Insurance Replacement does not infer any saving on a purchase price and will not be indicative of the resale value of the item.

