



VICTORIA JEWELLER & WATCHMAKER

ABN 89 626 762 856 Tel: (08) 9361 2844
415 Albany Highway, Victoria Park, W.A. 6100



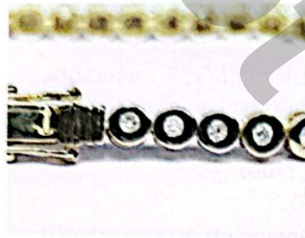
Web: www.victoriajeweller.com.au Email: info@victoriajeweller.com.au

CERTIFICATE OF VALUATION

Cash Converters – Phoenix Park
N/A

Reference: 11384-225001

Date: 21 May 2024



Description

DIAMOND TENNIS BRACELET

Stamped 375. 9ct Yellow gold.

The diamonds are rub over bezel set forming the tennis bracelet and is secured with an integrated press tongue clasp with a pair of figure eight safety clips and measures eighteen centimetres in length.



Measurements

44 x Diamonds – Round Brilliant cut, 1.7-1.8mm total estimated weight 1.01cts
Colour G-I, Clarity P2

Total gemstone weight: 1.01cts
Band: N/A
Ring Size: N/A

Manufacture: Mass production cast
Shank: N/A
Total Weight: 8.09 grams

Valuation based on retail replacement at a Perth traditional bricks and mortar retail outlet.

This valuation has been prepared for the sole purpose of retail replacement at a traditional bricks and mortar retail store. The value in this valuation may not be indicative of the usual market or sale price of this item. The valuation is subject to the terms and conditions supplied on the take-in form at the time of requesting this valuation, see reverse side.

TWO THOUSAND NINE HUNDRED & SIXTY DOLLARS

\$2,960.00

Represents the value for such articles for the purposes stated.

Exchange Rate: A.67 Gold: \$3649 Plat: \$1608
(AUD\$/Ounce)

TEENA SHEPPARD FGAA

Dip GEM, NCJV Registered Valuer Reg W0084
Gemmologist
Member NCJV WA Division
MEMBER GAA WA Division

T Sheppard



Gemstones have not been removed from the settings for accurate assessment, all grades and weights are approximate. Valuation is based on the current value at the time of valuation and includes Australian Government Taxes where applicable. This valuation is not suitable for any purpose other than the purpose(s) stated above and should not be relied on by an entity besides the addressee unless specifically noted.