



VICTORIA JEWELLER & WATCHMAKER

ABN 89 626 762 856 Tel: (08) 9361 2844

415 Albany Highway, Victoria Park, W.A. 6100

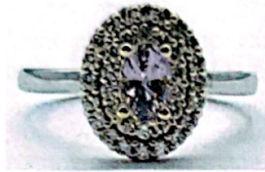
Web: www.victoriajeweller.com.au Email: info@victoriajeweller.com.au



Cash Converters Phoenix Park
Ref: 11345-224321

Date: 16 February 2024

CERTIFICATE OF VALUATION



Description: An 18ct, stamped 750 SMALES rose gold and white gold one sapphire and thirty four diamond ring. The sapphire is rose gold four claw set in the centre with two surrounding halos of rose gold four claw set diamonds. The shoulders are park lane in design and the white gold band is slightly rounded. The band measures 1.9mm to 2.0mm in width. Cad cast – hand assembled. Ring Size: L1/2.

Measurements:

1 x Sapphire – oval faceted, 5.77mm x 3.94mm, estimated weight 0.60ct, light pink colour, Clarity type II, slightly included.

34 x Diamonds – round brilliant cut, 1.3mm to 1.4mm, estimated weight 0.01ct each, Clarity SI, Colour G-H.

Due to the stones being set the weight, clarity and colour are estimated.
Total Diamond Weight: 0.34ct.
Total Weight: 4.60 grams.

Valuation based on retail replacement in a Smales Jewellery Perth retail outlet.

Retail Replacement Value

\$6,150.00

The total valuation of this item is six thousand one hundred and fifty dollars.

Exchange Rate: US\$0.64
Metal Prices: Aus \$: Gold - \$3,088.26

Rg Macham

Valued by Rebecca Macham FGAA. NCJV Reg Valuer WA0063



Gemstones have not been removed from the settings for accurate assessment, all grades and weights are approximate. Valuation is based on the current value at the time of valuation and includes Australian Government Taxes where applicable. This valuation is not suitable for any purpose other than the purpose(s) stated above and should not be relied on by an entity besides the addressee unless specifically noted.