



# VICTORIA JEWELLER & WATCHMAKER

ABN 89 626 762 856 Tel: (08) 9361 2844

415 Albany Highway, Victoria Park, W.A. 6100

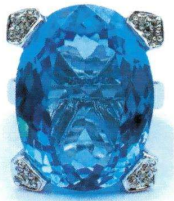
Web: [www.victoriajeweller.com.au](http://www.victoriajeweller.com.au) Email: [info@victoriajeweller.com.au](mailto:info@victoriajeweller.com.au)



Cash Converters Fremantle  
Ref: 996-271502

Date: 7 July 2023

## CERTIFICATE OF VALUATION



**Description:** A 14ct, stamped 585 white gold one topaz and sixteen diamond ring. The topaz is four claw set with pave set diamonds at the top of each claw. The flat band contains an inner ring sizing sleeve. Cast manufacture.  
Ring Size: 1 1/2.

**Measurements:**

1 x Topaz – oval chequerboard faceted, 20.10mm x 15.0mm x 8.5mm, estimated weight 18.48ct, medium blue, bright colour, Clarity eye clean.

16 x Diamonds – single cut, 1.0mm, estimated weight 0.005ct each, Clarity P2-P3, Colour K-M, chipped.

Due to the stones being set the weight, clarity and colour are estimated.  
Total Diamond Weight: 0.08ct.  
Total Weight: 10.07 grams.

Valuation based on retail replacement in a traditional bricks and mortar Perth retail outlet.

**Retail Replacement Value**

**\$2,870.00**

The total valuation of this item is two thousand eight hundred and seventy dollars.

Exchange Rate: US\$0.66  
Metal Prices: Aus \$ : Gold - \$2,890.55

*R Macham*

Valued by Rebecca Macham FGAA. NCJV Reg Valuer WA0063



Gemstones have not been removed from the settings for accurate assessment, all grades and weights are approximate. Valuation is based on the current value at the time of valuation and includes Australian Government Taxes where applicable. This valuation is not suitable for any purpose other than the purpose(s) stated above and should not be relied on by an entity besides the addressee unless specifically noted.