



VICTORIA JEWELLER & WATCHMAKER

ABN 89 626 762 856 Tel: (08) 9361 2844

415 Albany Highway, Victoria Park, W.A. 6100

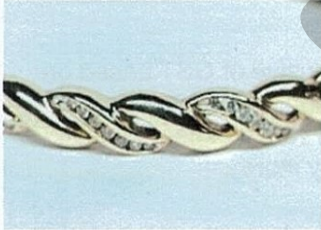
Web: www.victoriajeweller.com.au Email: info@victoriajeweller.com.au



CERTIFICATE OF VALUATION

Name: Cash Converters – Vic Park
Address: N/A

Reference: 1966-226894
Date: 19 July 2024



Description DIAMOND BANGLE

Stamped 375. A&C25 28. 9ct Yellow gold.

Diamonds are channel set in the twist/cross-over design of the oval shaped, hinged, flat profile bangle. A press tongue clasp with a pair of figure eight safety clips are fitted and the internal diameter measures fifty-eight millimetres. Exact replacement may be difficult.



Measurements

4 x Diamonds – Round Brilliant cut, 1.7mm total estimated weight 0.08cts

6 x Diamonds – Round Brilliant cut, 1.5-1.6mm total estimated weight 0.10cts

14 x Diamonds – Round Brilliant cut, 1.3-1.4mm total estimated weight 0.14cts

Colour K-M, Clarity P1-P2

Total diamond weight: 0.32cts

Manufacture: Mass production cast

Band: N/A

Shank: N/A

Ring Size: N/A

Total Weight: 8.15 grams

Valuation based on **retail replacement at a Perth traditional bricks and mortar retail outlet.**

This valuation has been prepared for the sole purpose of retail replacement at a traditional bricks and mortar retail store. The value in this valuation may not be indicative of the usual market or sale price of this item. The valuation is subject to the terms and conditions supplied on the take-in form at the time of requesting this valuation, see reverse side.

TWO THOUSAND SIX HUNDRED & FIVE DOLLARS

\$2,605.00

Represents the value for such articles for the purposes stated.

Exchange Rate: A.67
(AUD\$/Ounce)

Gold: \$3641

Plat: \$1477

TEENA SHEPPARD FGAA

Dip GEM, NCJV Registered Valuer Reg W0084

Gemmologist

Member NCJV WA Division

Member GAA WA Division

T Sheppard



Gemstones have not been removed from the settings for accurate assessment, all grades and weights are approximate. Valuation is based on the current value at the time of valuation and includes Australian Government Taxes where applicable.

This valuation is not suitable for any purpose other than the purpose(s) stated above and should not be relied on by an entity besides the addressee unless specifically noted.